

INSTRUMENT APPROACH
CHART (IAC)

FORTALEZA / Pinto Martins, INTL (SBFZ)

AD ELEV: 82'

RNAV(GNSS) RWY 13

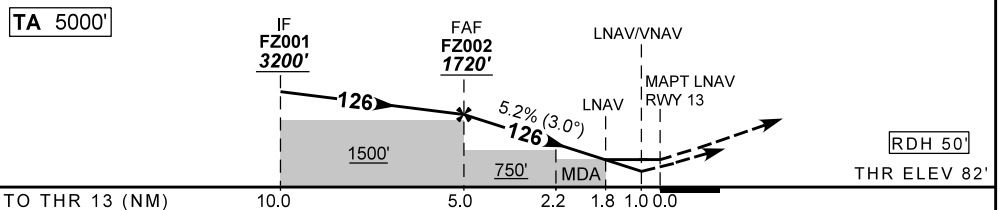
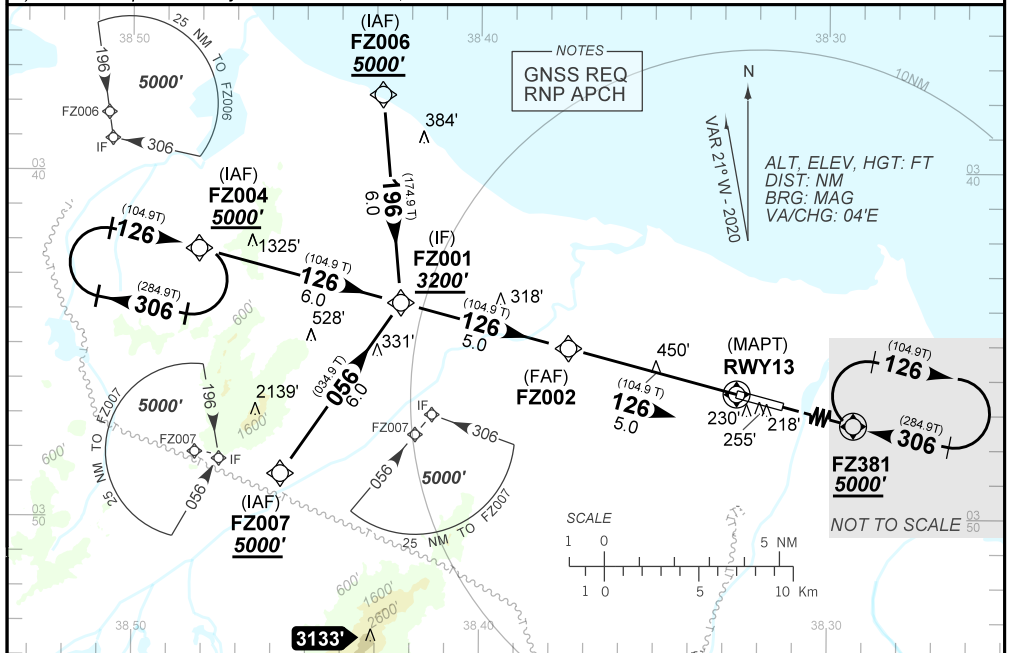
D-ATIS 127.70	APP FORTALEZA 120.50 122.50 133.00 134.55		TWR FORTALEZA 129.00 121.50	GNDC FORTALEZA 121.95
LOC ICT N/A	FINAL CRS 126°	FAF: 1720'	LNAV/VNAV DA / (OCH): 434' / (352')	LNAV MDA / (OCH): 700' / (620')

APCH Perdida : Subir para **5000'** no rumo **126** para espera em FZ381.

Missed APCH: Climb to **5000'** on course **126** for holding at FZ381.

RMK: 1) Para sistemas não compensados Baro-VNAV, LNAV/VNAV NÃO AUTORIZADO abaixo de -10°C ou acima de 50°C.

1) For uncompensated systems Baro-VNAV, LNAV/VNAV NOT AUTHORIZED below -10°C or above 50°C.



	FZ002	4.0	3.0	2.0	1.8	RWY13		KT	090	110	130	150	170	190
	1720	1400	1085	770	700	ALT		FPM	500	600	700	800	900	1000
	1638	1318	1003	688	618	(HGT)		FAF-MAPT	NA					

STRAIGHT-IN	CAT	A	B	C	D	E
LNAV/VNAV	DA / (OCH)	434' / (352')				NA
	ALS/NO ALS/ RVR ALS (m)	NIL / 1600 / NIL				
LNAV	MDA / (OCH)	700' / (620')				
	ALS/NO ALS/ RVR ALS (m)	NIL / 1600 / NIL		NIL / 2800 / NIL		
CIRCLING	MDA / (OCH)	NA				
	VIS (m)					

CHANGES: NEW CHART.



CODING TABLE

IAC RNAV (GNSS) RWY 13					FORTALEZA / Pinto Martins, INTL (SBFZ)							SBFZ_IAC_00P		SUP/SUPP AIP N019/A014 02 JAN 20	
Seq Num	Transition Identifier	Fly Over	Rec Navaid	Fix Ident	Path and Terminator	Course Angle	Turn	Upper Limit Altitude (FT)	Lower Limit Altitude (FT)	Speed Limit (KT)	Speed Limit Description	TM DST	VA (°)	Role of the Fix	Navigation Specification
10	APPROACH	N	N/A	FZ004	IF	N/A	N/A	N/A	+5000	N/A	N/A	N/A	N/A	IAF	RNP APCH
20	APPROACH	N	N/A	FZ001	TF	125.98° Mag 104.93° True	N/A	N/A	+3000	N/A	N/A	6.00	N/A	IF	RNP APCH
10	APPROACH	N	N/A	FZ006	IF	N/A	N/A	N/A	+5000	N/A	N/A	N/A	N/A	IAF	RNP APCH
20	APPROACH	N	N/A	FZ001	TF	195.98° Mag 174.93° True	N/A	N/A	+3000	N/A	N/A	6.00	N/A	IF	RNP APCH
10	APPROACH	N	N/A	FZ007	IF	N/A	N/A	N/A	+5000	N/A	N/A	N/A	N/A	IAF	RNP APCH
20	APPROACH	N	N/A	FZ001	TF	55.98° Mag 34.93° True	N/A	N/A	+3000	N/A	N/A	6.00	N/A	IF	RNP APCH
10	FINAL	N	N/A	FZ001	IF	N/A	N/A	N/A	+3000	N/A	N/A	N/A	N/A	IF	RNP APCH
20	FINAL	N	N/A	FZ002	TF	125.98° Mag 104.92° True	N/A	N/A	+1720	N/A	N/A	5.00	N/A	FAF	RNP APCH
30	FINAL	N	N/A	FZ008	TF	125.88° Mag 104.83° True	N/A	N/A	+830	N/A	N/A	2.80	-3.00	SDF	RNP APCH
40	FINAL	Y	N/A	RWY12	TF	126.03° Mag 104.98° True	N/A	N/A	@132	N/A	N/A	2.20	-3.00	LTP/FTP	RNP APCH
10	MA	N	N/A	FZ381	CF	125.94° Mag 104.90° True	N/A	N/A	+5000	N/A	N/A	19.38	N/A	MAHF	RNP APCH
20	MA	N	N/A	FZ381	HM	305.97° Mag 284.93° True	R	N/A	+5000	N/A	N/A	1.00 min	N/A	MAHF	RNP APCH

Ident	Latitude / Longitude (WGS84) DD:MM:SS.SS
FZ001	S 03:43:48.76W 38:42:17.23
FZ002	S 03:45:06.41W 38:37:27.25
FZ008	S 03:45:49.64W 38:34:44.80
FZ004	S 03:42:15.54W 38:48:05.17
FZ006	S 03:37:48.41W 38:42:49.05
FZ007	S 03:48:45.34W 38:45:43.44
FZ381	S 03:51:24.60W 38:13:53.40
RWY12	S 03:46:26.47 W 38:32:27.86

COD	Meaning
+	AT OR ABOVE
-	AT OR BELOW
@	AT
R	RECOMMENDED
B	BETWEEN
=	AS ASSIGNED
SDF	STEPDOWN FIX
Y	YES
N	NO
L	LEFT
R	RIGHT
N/A	NOT APPLICABLE
LTP	LANDING THRESHOLD POINT
FTP	FICTITIOUS THRESHOLD POINT