

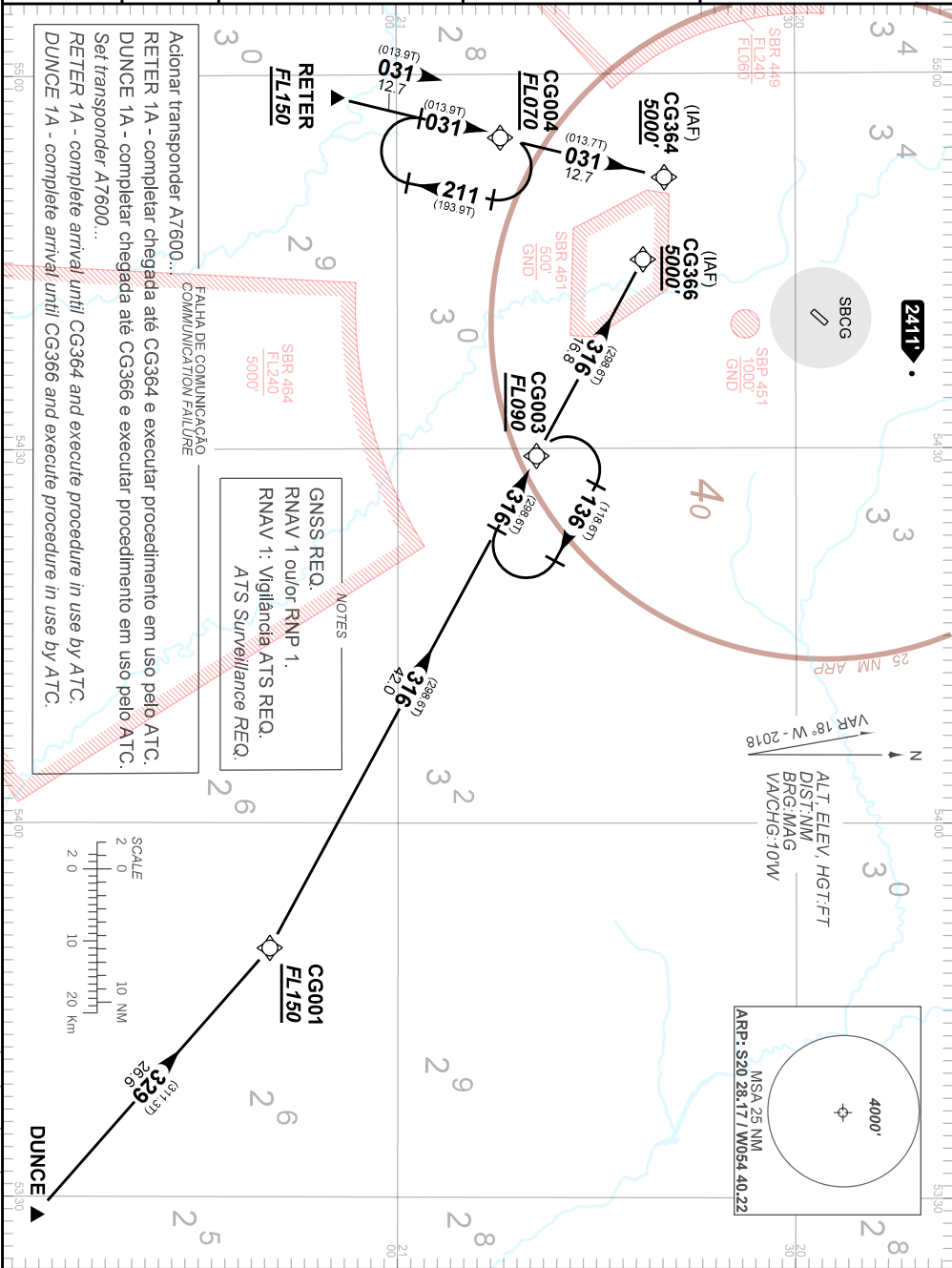
STANDARD ARRIVAL CHART
INSTRUMENT (STAR)

CAMPO GRANDE / Campo Grande, INTL (SBCG)
RWY 06

AD ELEV: 1834'

RNAV DUNCE 1A - RETER 1A

TA 5000'	D-ATIS 127.60	ACC CURITIBA 124.275 128.35 133.50 135.80 121.50	APP CAMPO GRANDE 119.35 119.65 120.20 121.00 121.50	TWR CAMPO GRANDE 118.10 121.50
----------	---------------	--	---	-----------------------------------



Accionar transponder A7600...
RETER 1A - completar chegada até CG364 e executar procedimento em uso pelo ATC.
DUNCE 1A - completar chegada até CG366 e executar procedimento em uso pelo ATC.
Set transponder A7600...
RETER 1A - complete arrival until CG364 and execute procedure in use by ATC.
DUNCE 1A - complete arrival until CG366 and execute procedure in use by ATC.

NOTES
GNSS REQ.
RNAV 1 ou/ou RNP 1.
RNAV 1: Vigilância ATS REQ.
ATS Surveillance REQ.



CHANGES: DEC. IDENT. PROC. RMK LAYOUT.

INTENCIONALMENTE EM BRANCO
INTENTIONALLY LEFT BLANK