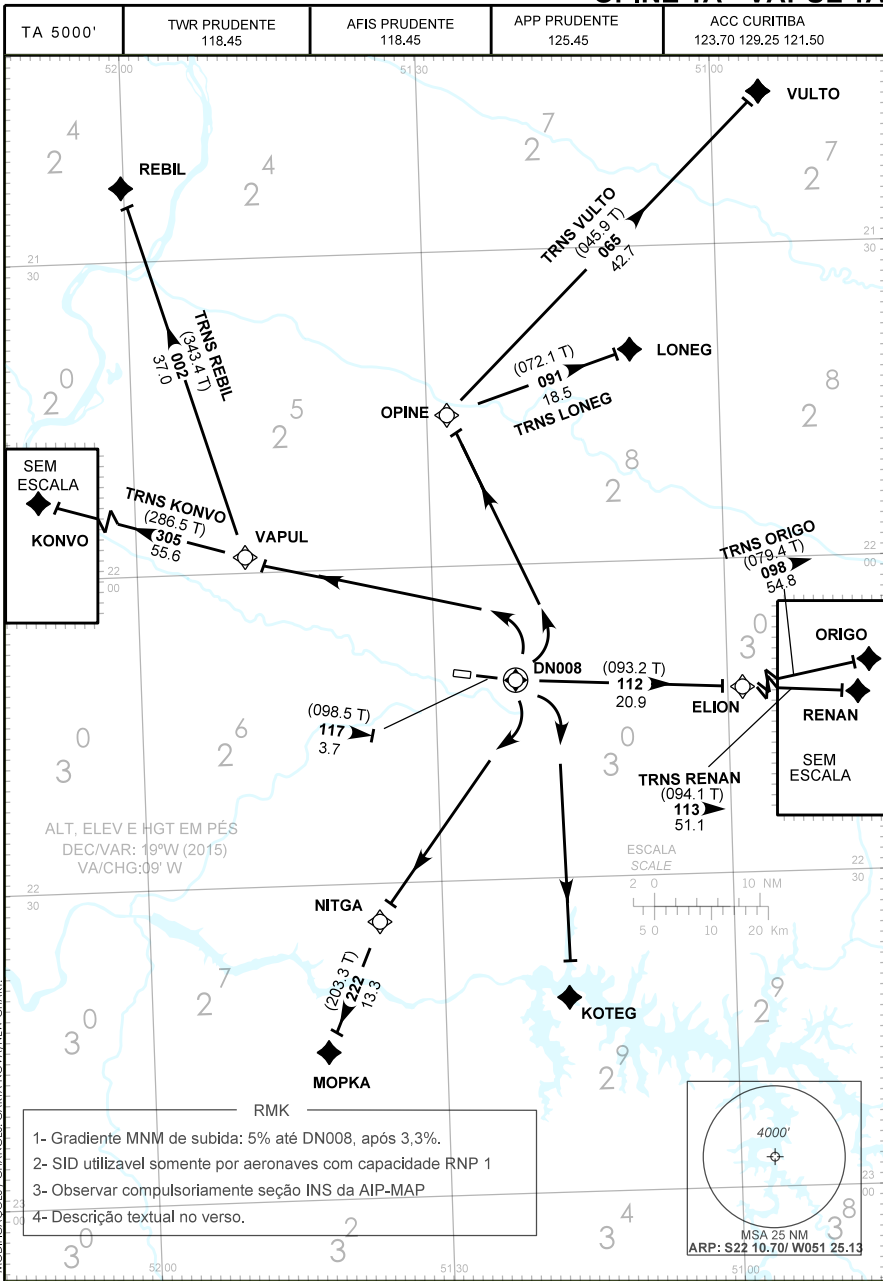


CARTA DE SAÍDA PADRÃO
 POR INSTRUMENTOS (SID)
 STANDARD DEPARTURE CHART
 INSTRUMENT (SID)

PRESIDENTE PRUDENTE / Presidente Prudente (SBDN)
RWY 12
RNAV ELION 1A - KOTEG 1A - MOPKA 1A
OPINE 1A - VAPUL 1A



MODIFICAÇÕES / CHANGES: CARTA NOVA/NEW CHART.

CARTA DE SAÍDA PADRÃO
POR INSTRUMENTOS (SID)
STANDARD DEPARTURE CHART
INSTRUMENT (SID)

PRESIDENTE PRUDENTE / Presidente Prudente (SBDN)
RWY 12
RNAV ELION 1A - KOTEG 1A - MOPKA 1A
OPINE 1A - VAPUL 1A

— DESCRIÇÃO TEXTUAL —

SAÍDA ELION 1A

Após a decolagem, manter rumo 117 até DN008. Curvar à esquerda, rumo 112 até ELION. Então...

1- TRNS ORIGO: ...curvar à esquerda rumo 098 até ORIGO.

2- TRNS RENAN: ...curvar à direita rumo 113 até RENAN.

SAÍDA KOTEG 1A

Após a decolagem, manter rumo 117 até DN008. Curvar à direita direto KOTEG.

SAÍDA MOPKA 1A

Após a decolagem, manter rumo 117 até DN008. Curvar à direita direto NITGA. Curvar à esquerda rumo 222 até MOPKA.

SAÍDA OPINE 1A

Após a decolagem, manter rumo 117 até DN008. Curvar à esquerda direto OPINE. Então...

1- TRNS LONEG: ...curvar à direita rumo 091 até LONEG.

2- TRNS VULTO: ...curvar à direita rumo 065 até VULTO.

SAÍDA VAPUL 1A

Após a decolagem, manter rumo 117 até DN008. Curvar à esquerda direto VAPUL. Então...

1- TRNS KONVO: ...curvar à esquerda rumo 305 até KONVO.

2- TRNS REBIL: ...curvar à direita rumo 002 até REBIL.

020	Enroute	TF	RENAN	---	N	---	113 (094.1)	51.1	R	---	---	---	RNP 1
SID KOTEG 1A													
010	Enroute	IF	DN008	---	Y	---	---	---	---	---	---	---	RNP 1
020	Enroute	DF	KOTEG	---	N	---	---	---	R	---	---	---	RNP 1
SID MOPKA 1A													
010	Enroute	IF	DN008	---	Y	---	---	---	---	---	---	---	RNP 1
020	Enroute	DF	NITGA	---	N	---	---	---	R	---	---	---	RNP 1
030	Enroute	TF	MOPKA	---	N	---	222 (203.3)	13.3	L	---	---	---	RNP 1
SID OPINE 1A													
010	Enroute	IF	DN008	---	Y	---	---	---	---	---	---	---	RNP 1
020	Enroute	DF	OPINE	---	N	---	---	---	L	---	---	---	RNP 1
TRNS LONEG													
010	Enroute	IF	OPINE	---	N	---	---	---	---	---	---	---	RNP 1
020	Enroute	TF	LONEG	---	N	---	091 (072.1)	18.5	R	---	---	---	RNP 1
TRNS VULTO													
010	Enroute	IF	OPINE	---	N	---	---	---	---	---	---	---	RNP 1
020	Enroute	TF	VULTO	---	N	---	065 (045.9)	42.7	R	---	---	---	RNP 1
SID VAPUL 1A													
010	Enroute	IF	DN008	---	Y	---	---	---	---	---	---	---	RNP 1
020	Enroute	DF	VAPUL	---	N	---	---	---	L	---	---	---	RNP 1
TRNS KONVO													
010	Enroute	IF	VAPUL	---	N	---	---	---	---	---	---	---	RNP 1
020	Enroute	TF	KONVO	---	N	---	305 (286.5)	55.6	L	---	---	---	RNP 1
TRNS REBIL													
010	Enroute	IF	VAPUL	---	N	---	---	---	---	---	---	---	RNP 1
020	Enroute	TF	REBIL	---	N	---	002 (343.4)	37.0	R	---	---	---	RNP 1

Ident	Latitude / Longitude (WGS84) DD:MM:SS.SS
DN008	S 22:11:08.12W 51:20:56.14
VAPUL	S 21:58:28.20W 51:48:57.00
REBIL	S 21:22:54.76W 52:00:17.21
KONVO	S 21:42:21.00W 52:46:07.00
NITGA	S 22:33:38.59W 51:36:20.54
MOPKA	S 22:45:55.79W 51:42:03.21
KOTEG	S 22:41:24.60W 51:17:10.20
ELION	S 22:12:18.00W 50:58:28.80
OPINE	S 21:45:33.60W 51:27:52.80
VULTO	S 21:15:33.60W 50:55:09.00
LONEG	S 21:39:48.64W 51:08:59.29
ORIGO	S 22:01:50.40W 50:00:32.40
RENAN	S 22:15:40.20W 50:03:28.80

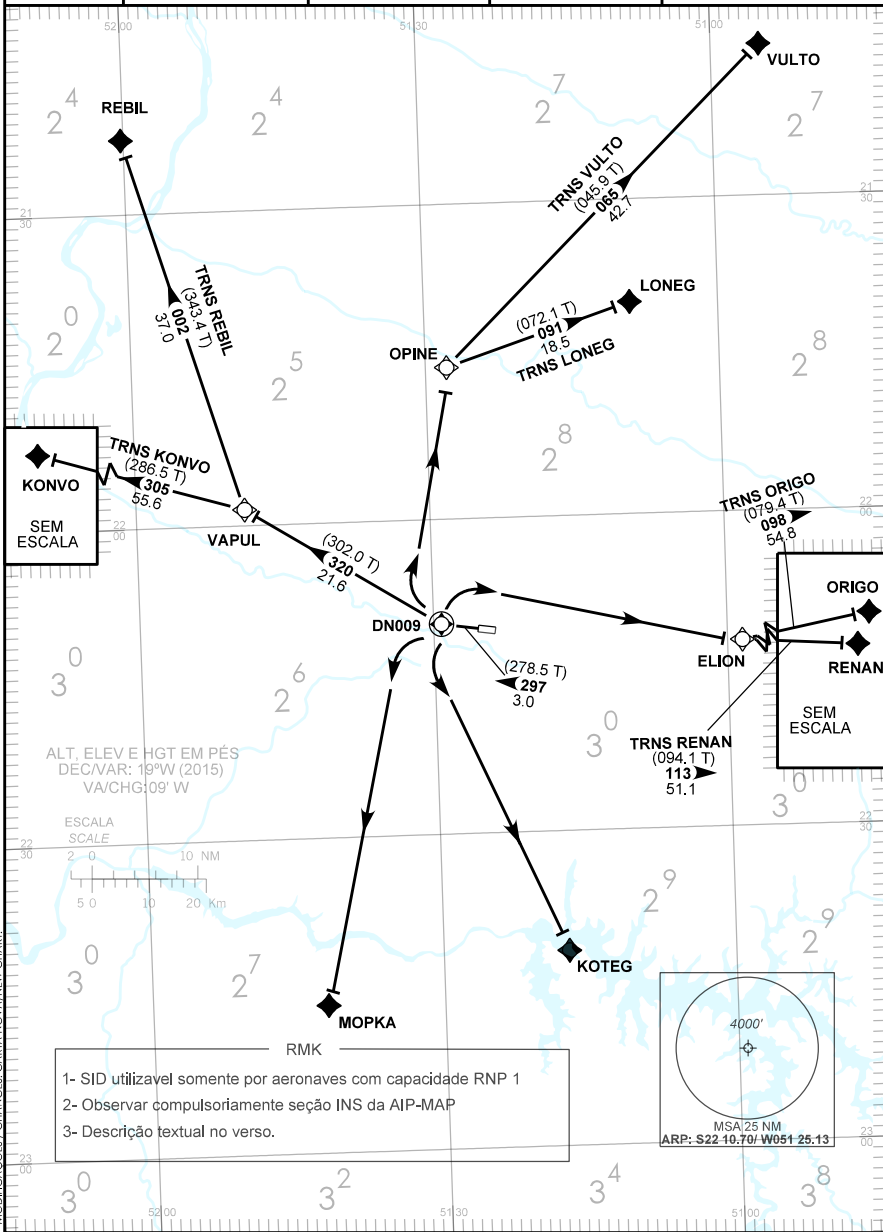
COD	Meaning
+	AT OR ABOVE
-	AT OR BELOW
=	MANDATORY
	RECOMMENDED
SDF	STEPDOWN FIX
Y	YES
N	NO
L	LEFT
R	RIGHT

DER	Latitude / Longitude (WGS84) DD:MM:SS.SS	Elevation (FT)
12	S 22:10:35.16 W 51:24:52.71	1481.10 ft MSL
30	S 22:10:25.46 W 51:26:02.15	1411.52 ft MSL

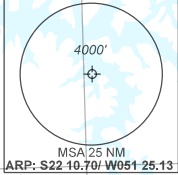
CARTA DE SAÍDA PADRÃO
 POR INSTRUMENTOS (SID)
 STANDARD DEPARTURE CHART
 INSTRUMENT (SID)

PRESIDENTE PRUDENTE / Presidente Prudente (SBDN)
RWY 30
RNAV ELION 1A - KOTEG 1A - MOPKA 1A
OPINE 1A - VAPUL 1A

TA 5000'	TWR PRUDENTE 118.45	AFIS PRUDENTE 118.45	APP PRUDENTE 125.45	ACC CURITIBA 123.70 129.25 121.50
----------	------------------------	-------------------------	------------------------	--------------------------------------



- RMK
- 1- SID utilizavel somente por aeronaves com capacidade RNP 1
 - 2- Observar compulsoriamente seção INS da AIP-MAP
 - 3- Descrição textual no verso.



MODIFICAÇÕES / CHANGES: CARTA NOVA/NEW CHART.

CARTA DE SAÍDA PADRÃO
POR INSTRUMENTOS (SID)
STANDARD DEPARTURE CHART
INSTRUMENT (SID)

PRESIDENTE PRUDENTE / Presidente Prudente (SBDN)
RWY 30
RNAV ELION 1A - KOTEG 1A - MOPKA 1A
OPINE 1A - VAPUL 1A

DESCRIÇÃO TEXTUAL

SAÍDA ELION 1A

Após a decolagem, manter rumo 297 até DN009. Curvar à direita direto ELION. Então...

1- TRNS ORIGO: ...curvar à esquerda rumo 098 até ORIGO.

2- TRNS RENAN: ...manter o rumo 113 até RENAN.

SAÍDA KOTEG 1A

Após a decolagem, manter rumo 297 até DN009. Curvar à esquerda direto KOTEG.

SAÍDA MOPKA 1A

Após a decolagem, manter rumo 297 até DN009. Curvar à esquerda direto MOPKA.

SAÍDA OPINE 1A

Após a decolagem, manter rumo 297 até DN009. Curvar à direita direto OPINE. Então...

1- TRNS LONEG: ...curvar à direita rumo 091 até LONEG.

2- TRNS VULTO: ...curvar à direita rumo 065 até VULTO.

SAÍDA VAPUL 1A

Após a decolagem, manter rumo 297 até DN009. Curvar à direita rumo 320 até VAPUL. Então...

1- TRNS KONVO: ...curvar à esquerda rumo 305 até KONVO.

2- TRNS REBIL: ...curvar à direita rumo 002 até REBIL.

020	Enroute	TF	RENAN	---	N	---	113 (094.1)	51.1	R	---	---	---	RNP 1
SID KOTEG 1A													
010	Enroute	IF	DN009	---	Y	---	---	---	---	---	---	---	RNP 1
020	Enroute	DF	KOTEG	---	N	---	---	---	L	---	---	---	RNP 1
SID MOPKA 1A													
010	Enroute	IF	DN009	---	Y	---	---	---	---	---	---	---	RNP 1
020	Enroute	DF	MOPKA	---	N	---	---	---	L	---	---	---	RNP 1
SID OPINE 1A													
010	Enroute	IF	DN009	---	Y	---	---	---	---	---	---	---	RNP 1
020	Enroute	DF	OPINE	---	N	---	---	---	R	---	---	---	RNP 1
TRNS LONEG													
010	Enroute	IF	OPINE	---	N	---	---	---	---	---	---	---	RNP 1
020	Enroute	TF	LONEG	---	N	---	091 (072.1)	18.5	R	---	---	---	RNP 1
TRNS VULTO													
010	Enroute	IF	OPINE	---	N	---	---	---	---	---	---	---	RNP 1
020	Enroute	TF	VULTO	---	N	---	065 (045.9)	42.7	R	---	---	---	RNP 1
SID VAPUL 1A													
010	Enroute	IF	DN009	---	Y	---	---	---	---	---	---	---	RNP 1
020	Enroute	TF	VAPUL	---	N	---	320 (302.0)	21.6	R	---	---	---	RNP 1
TRNS KONVO													
010	Enroute	IF	VAPUL	---	N	---	---	---	---	---	---	---	RNP 1
020	Enroute	TF	KONVO	---	N	---	305 (286.5)	55.6	L	---	---	---	RNP 1
TRNS REBIL													
010	Enroute	IF	VAPUL	---	N	---	---	---	---	---	---	---	RNP 1
020	Enroute	TF	REBIL	---	N	---	002 (343.4)	37.0	R	---	---	---	RNP 1

Ident	Latitude / Longitude (WGS84) DD:MM:SS.SS
DN009	S 22:09:58.65W 51:29:13.93
VAPUL	S 21:58:28.20W 51:48:57.00
REBIL	S 21:22:54.76W 52:00:17.21
KONVO	S 21:42:21.00W 52:46:07.00
MOPKA	S 22:45:55.79W 51:42:03.21
KOTEG	S 22:41:24.60W 51:17:10.20
ELION	S 22:12:18.00W 50:58:28.80
OPINE	S 21:45:33.60W 51:27:52.80
VULTO	S 21:15:33.60W 50:55:09.00
LONEG	S 21:39:48.64W 51:08:59.29
ORIGO	S 22:01:50.40W 50:00:32.40
RENAN	S 22:15:40.20W 50:03:28.80

COD	Meaning
+	AT OR ABOVE
-	AT OR BELOW
=	MANDATORY
	RECOMMENDED
SDF	STEPDOWN FIX
Y	YES
N	NO
L	LEFT
R	RIGHT

DER	Latitude / Longitude (WGS84) DD:MM:SS.SS	Elevation (FT)
12	S 22:10:35.16 W 51:24:52.71	1481.10 ft MSL
30	S 22:10:25.46 W 51:26:02.15	1411.52 ft MSL