

INSTRUMENT APPROACH
CHART (IAC)

FORTALEZA / Pinto Martins, INTL (SBFZ)

AD ELEV: 82'

RNAV(GNSS) RWY 12

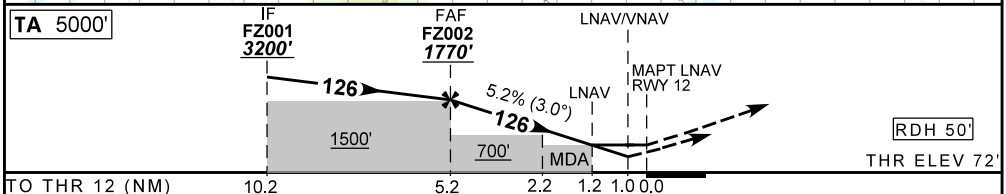
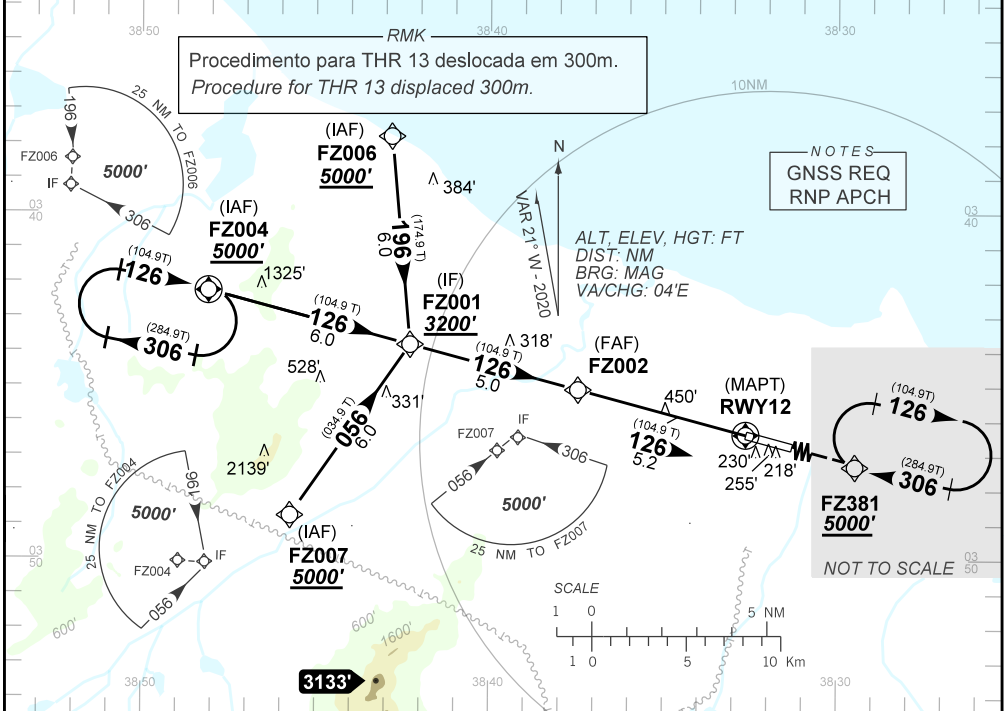
D-ATIS 127.70	APP FORTALEZA 120.50 122.50 133.00 134.55	TWR FORTALEZA 129.00 121.50	GNDC FORTALEZA 121.95
N/A	FINAL CRS 126°	FAF 1770'	MDA / (OCH): 510' / (440')
		LNAV/VNAV DA / (OCH): 434' / (362')	LNAV

APCH Perdida: Subir para **5000'** no rumo **126** para espera em FZ381.

Missed APCH: Climb to **5000'** on course **126** for holding at FZ381.

RMK: 1) Para sistemas não compensados Baro-VNAV, LNAV/VNAV NAO AUTORIZADO abaixo de -10°C ou acima de 50°C.

1) For uncompensated systems Baro-VNAV, LNAV/VNAV NOT AUTHORIZED below -10°C or above 50°C.



FZ002	4.0	3.0	2.0	1.2	RWY12	KT	090	110	130	150	170	190
1770	1400	1085	770	510	ALT	FPM	500	600	700	800	900	1000
1698	1328	1013	698	438	(HGT)	FAF-MAPT	NA					

STRAIGHT-IN	CAT	A	B	C	D	E
	DA / (OCH)	434' / (362')				NA
LNAV/VNAV	ALS/NO ALS/ RVR ALS (m)	NIL / 1600 / NIL		NIL / 1700 / NIL		
	MDA / (OCH)	510' / (440')				
LNAV	ALS/NO ALS/RVR ALS (m)	NIL / 1600 / NIL		NIL / 2000 / NIL		
	MDA / (OCH)	NA				
CIRCLING	MDA / (OCH)	NA				
	VIS (m)	NA				

CHANGES: NEW CHART



CODING TABLE

IAC RNAV(GNSS) RWY 12 (RWY13 DISPLACED 300M)					FORTALEZA / Pinto Martins, INTL (SBFZ)							SBFZ_IAC_01G		SUP/SUPP AIP N020/A015 02 JAN 20	
Seq Num	Transition Identifier	Fly Over	Rec Navaid	Fix Ident	Path and Terminator	Course Angle	Turn	Upper Limit Altitude (FT)	Lower Limit Altitude (FT)	Speed Limit (KT)	Speed Limit Description	TM DST	VA (°)	Role of the Fix	Navigation Specification
10	APPROACH	N	N/A	FZ004	IF	N/A	N/A	N/A	+5000	N/A	N/A	N/A	N/A	IAF	RNP APCH
20	APPROACH	N	N/A	FZ001	TF	125.98° Mag 104.93° True	N/A	N/A	+3200	N/A	N/A	6.00	N/A	IF	RNP APCH
10	APPROACH	N	N/A	FZ006	IF	N/A	N/A	N/A	+5000	N/A	N/A	N/A	N/A	IAF	RNP APCH
20	APPROACH	N	N/A	FZ001	TF	195.98° Mag 174.93° True	N/A	N/A	+3200	N/A	N/A	6.00	N/A	IF	RNP APCH
10	APPROACH	N	N/A	FZ007	IF	N/A	N/A	N/A	+5000	N/A	N/A	N/A	N/A	IAF	RNP APCH
20	APPROACH	N	N/A	FZ001	TF	55.98° Mag 34.93° True	N/A	N/A	+3200	N/A	N/A	6.00	N/A	IF	RNP APCH
10	FINAL	N	N/A	FZ001	IF	N/A	N/A	N/A	+3200	N/A	N/A	N/A	N/A	IF	RNP APCH
20	FINAL	N	N/A	FZ002	TF	125.98° Mag 104.92° True	N/A	N/A	+1770	N/A	N/A	5.00	N/A	FAF	RNP APCH
30	FINAL	N	N/A	FZ003	TF	125.98° Mag 104.93° True	N/A	N/A	+820	N/A	N/A	2.96	-3.00	FZ003	RNP APCH
40	FINAL	Y	N/A	RWY12	TF	125.93° Mag 104.88° True	N/A	N/A	@122	N/A	N/A	2.20	-3.00	LTP/FTP	RNP APCH
10	MA	N	N/A	FZ381	CF	125.97° Mag 104.93° True	N/A	N/A	+5000	N/A	N/A	19.21	N/A	MAHF	RNP APCH
20	MA	N	N/A	FZ381	HM	305.97° Mag 284.93° True	R	N/A	+5000	N/A	N/A	1.00 min	N/A	MAHF	RNP APCH

Ident	Latitude / Longitude (WGS84) DD:MM:SS.SS
FZ001	S 03:43:48.76W 38:42:17.23
FZ002	S 03:45:06.41W 38:37:27.25
FZ003	S 03:45:52.41W 38:34:35.48
FZ004	S 03:42:15.54W 38:48:05.17
FZ006	S 03:37:48.41W 38:42:49.05
FZ007	S 03:48:45.34W 38:45:43.44
FZ381	S 03:51:24.60W 38:13:53.40
RWY12	S 03:46:26.47 W 38:32:27.86

COD	Meaning
+	AT OR ABOVE
-	AT OR BELOW
@	AT
R	RECOMMENDED
B	BETWEEN
=	AS ASSIGNED
SDF	STEPDOWN FIX
Y	YES
N	NO
L	LEFT
R	RIGHT
N/A	NOT APPLICABLE
LTP	LANDING THRESHOLD POINT
FTP	FICTITIOUS THRESHOLD POINT