

**INSTRUMENT APPROACH
CHART (IAC)**

MARINGÁ / Silvio Name Júnior (SBMG)

AD ELEV: 1801'

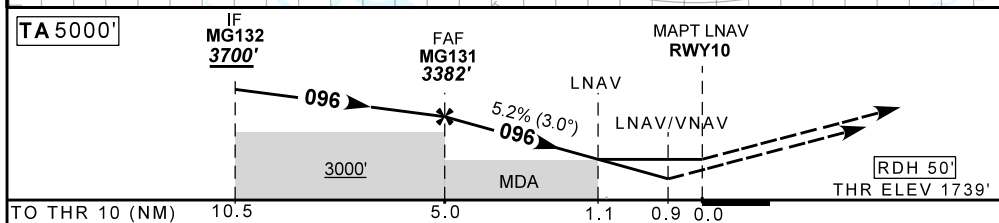
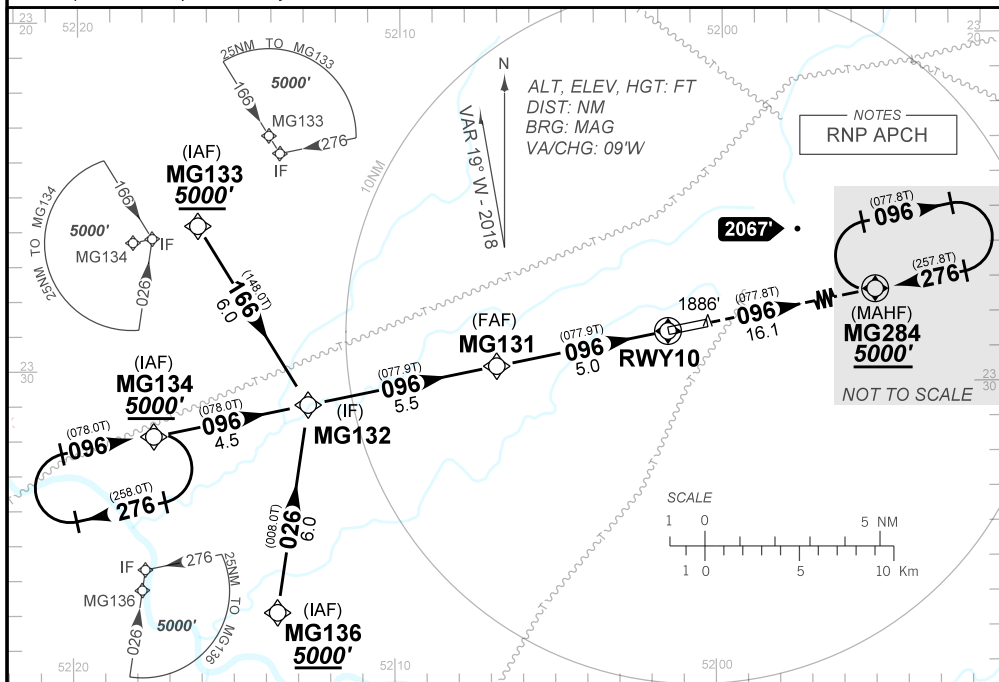
RNAV (GNSS) Z RWY 10

ATIS NIL	APP LONDRINA 129.70	TWR MARINGÁ 118.75	GNDC NIL
N/A	FINAL CRS 096°	FAF 3382'	LNAV / VNAV DA / (OCH): 2067' (330') LNAV MDA / (OCH): 2140' (400')

APCH Perdida: 1) Subir para **5000'** rumo **096°** para espera em MG284.

Missed APCH: 1) Climb to **5000'** course **096°** to MG284 for holding.

RMK: 1) Para sistemas não compensados, Baro-VNAV NÃO AUTORIZADO abaixo de 0°C ou acima de 45°C.
1) For uncompensated systems, Baro-VNAV NOT AUTHORIZED below 0°C or above 45°C.



MG131	4.0	3.0	2.0	1.0	0.9	RWY10	KT	090	110	130	150	170	190
3382	3063	2744	2426	2107	2067	ALT	FPM	500	600	700	800	900	1000
1642	1323	1005	686	368	328	(HGT)	FAF-MAPT	NA					

STRAIGHT-IN	CAT	A	B	C	D	E
	DA / (OCH)	2067' / (330')				
LNAV/VNAV	ALS/NO ALS/ RVR ALS (m)	NIL / 1500 / NIL				
	MDA / (OCH)	2140' / (400')				
LNAV	ALS/NO ALS/ RVR ALS (m)	NIL / 1600 / NIL			NIL / 1800 / NIL	
	MDA / (OCH)	NA				
CIRCLING	MDA / (OCH)	NA				
	VIS (m)	NA				

CHANGES: LAYOUT, IDENT, WPT, RMK.

INTENCIONALMENTE EM BRANCO
INTENTIONALLY LEFT BLANK