

STANDARD DEPARTURE CHART  
INSTRUMENT (SID)

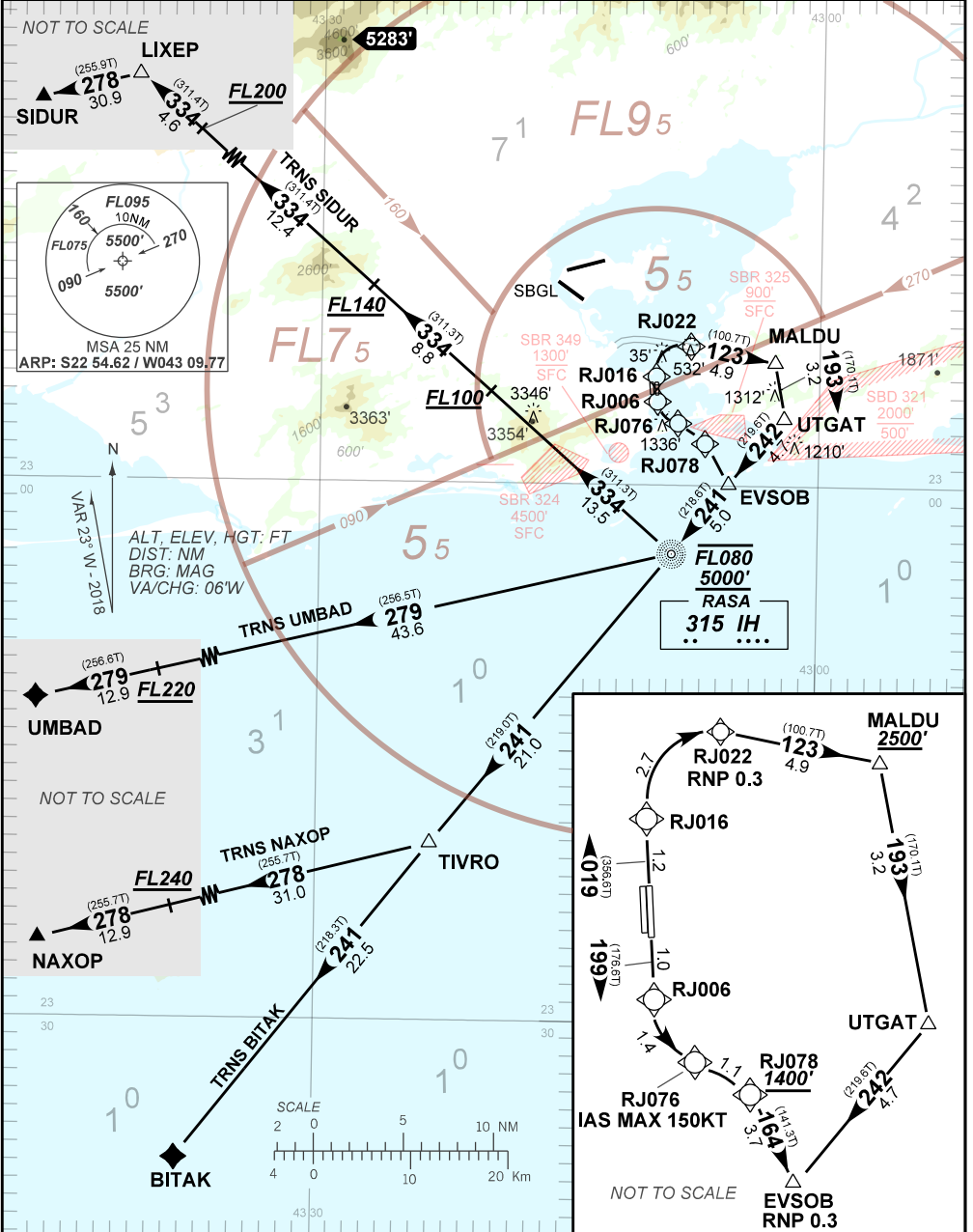
RIO DE JANEIRO / Santos Dumont (SBRJ)

RWY 02R/20L

RNP (AR) EVSOB 1B

AD ELEV: 10'

TA: 7000'	TWR RIO 118.70 121.50	APP RIO 134.40 121.25 121.50	APP SÃO PAULO 119.60 120.45 124.70 125.60 135.25 121.50	ACC CURITIBA 124.00 125.35 128.25 133.40 133.60 121.50
-----------	--------------------------	---------------------------------	---	--



CHANGES: PROC

AUTORIZAÇÃO ESPECIAL PARA AERONAVE E TRIPULAÇÃO REQUERIDA

— *RMK* —

- 1 - Gradiente mínimo de subida:
  - 1.1 - TRNS BITAK: 8,0% até 5000'.
  - 1.2 - TRNS NAXOP: 8,0% até 5000'. Após, 6% até FL240.
  - 1.3 - TRNS SIDUR: 8,0% até 5000'. Após, 7,1% até FL200.
  - 1.4 - TRNS UMBAD: 8,0% até 5000'. Após, 6,3% até FL220.
- 2 - MNM para DEP: VIS 800M.
- 3 - Observar compulsoriamente a seção INS da AIP-MAP.

— *TEXTUAL DESCRIPTION* —

SAÍDA RNP (AR) EVSOB 1A

RWY 02R

Após decolagem, manter rumo 019 até RJ016. Após, curva à direita até RJ022. Após, rumo 123 até MALDU. Curvar à direita, rumo 193 até UTGAT. Curvar à direita, rumo 242 até EVSOB. Curvar à esquerda, rumo 241 até NDB Rasa. Então,...

RWY 20L

Após decolagem, manter rumo 199 até RJ006. Após, curva à esquerda até RJ076. Após, curvar à direita até RJ078. Após, curvar à direita, rumo 164, até EVSOB. Curvar à direita, rumo 241 até NDB Rasa. Então,...

- 1 - TRNS BITAK:.....manter rumo 241 até BITAK.
- 2 - TRNS NAXOP:.....manter rumo 241 até TIVRO. Curvar à direita, rumo 278 até NAXOP.
- 3 - TRNS SIDUR: .....curvar à direita, rumo 334 até LIXEP. Curvar à esquerda, rumo 278 até SIDUR.
- 4 - TRNS UMBAD: .....curvar à direita, rumo 279 até UMBAD.



## CODING TABLE

SID RNP (AR) EVSOB 1B RWY 02R/20L					RIO DE JANEIRO / Santos Dumont (SBRJ)							SBRJ_SID_02G		12 SET 19	
Seq Num	Transition Identifier	Fly Over	Rec Navaid	Fix Ident	Path and Terminator	Course Angle	Turn	Upper Limit Altitude (FT)	Lower Limit Altitude (FT)	Speed Limit (KT)	Speed Limit Description	TM DST (NM)	VA (°)	Role Of TheFix	Navigation Specification
010	RUNWAY	N	N/A	TH02R	IF	N/A	N/A	N/A	N/A	N/A	N/A	N/A	N/A	N/A	N/A
020	RUNWAY	N	N/A	RJ016	TF	019.00° Mag 356.60° True	N/A	N/A	N/A	N/A	N/A	1.21	N/A	N/A	RNP 0.3
030	RUNWAY	N	N/A	RJ022	RF	N/A	R	N/A	N/A	N/A	N/A	2.70	N/A	N/A	RNP 0.3
N/A	N/A	N/A	N/A	RJ026	N/A	N/A	N/A	N/A	N/A	N/A	N/A	RADIUS 1.50	N/A	RF CENTER	N/A
040	RUNWAY	N	N/A	MALDU	TF	123.00° Mag 100.70° True	N/A	N/A	+2500	N/A	N/A	4.90	N/A	N/A	RNP 1.0
050	RUNWAY	N	N/A	UTGAT	TF	193.00° Mag 170.10° True	R	N/A	N/A	N/A	N/A	3.20	N/A	N/A	RNP 1.0
060	RUNWAY	N	N/A	EVSOB	TF	242.00° Mag 219.60° True	R	N/A	N/A	N/A	N/A	4.70	N/A	N/A	RNP 1.0
010	RUNWAY	N	N/A	TH20L	IF	N/A	N/A	N/A	N/A	N/A	N/A	N/A	N/A	N/A	N/A
020	RUNWAY	N	N/A	RJ006	TF	199.00° Mag 176.60° True	N/A	N/A	N/A	N/A	N/A	1.01	N/A	N/A	RNP 0.3
030	RUNWAY	N	N/A	RJ076	RF	N/A	L	N/A	N/A	150	-	1.40	N/A	N/A	RNP 0.3
N/A	N/A	N/A	N/A	RJ077	N/A	N/A	N/A	N/A	N/A	N/A	N/A	RADIUS 1.20	N/A	RF CENTER	N/A
040	RUNWAY	N	N/A	RJ078	RF	N/A	R	N/A	+1400	N/A	N/A	1.10	N/A	N/A	RNP 0.3
N/A	N/A	N/A	N/A	RJ079	N/A	N/A	N/A	N/A	N/A	N/A	N/A	RADIUS 2.00	N/A	RF CENTER	N/A
050	RUNWAY	N	N/A	EVSOB	TF	163.86° Mag 141.31° True	R	N/A	N/A	N/A	N/A	3.73	N/A	N/A	RNP 0.3
010	COMMON	N	N/A	EVSOB	IF	N/A	N/A	N/A	N/A	N/A	N/A	N/A	N/A	N/A	N/A
020	COMMON	N	N/A	IH	TF	241.00° Mag 218.60° True	N/A	- FL080	+5000	N/A	N/A	5.00	N/A	N/A	RNP 1.0

010	ENROUTE	N	N/A	IH	IF	N/A	N/A	- FL080	+5000	N/A	N/A	N/A	N/A	N/A	N/A
020	ENROUTE	N	N/A	TIVRO	TF	241.00° Mag 219.00° True	N/A	N/A	N/A	N/A	N/A	21.00	N/A	N/A	RNP 1.0
030	ENROUTE	N	N/A	BITAK	TF	241.00° Mag 218.30° True	N/A	N/A	N/A	N/A	N/A	22.50	N/A	N/A	RNP 1.0
010	ENROUTE	N	N/A	IH	IF	N/A	N/A	- FL080	+5000	N/A	N/A	N/A	N/A	N/A	N/A
020	ENROUTE	N	N/A	TIVRO	TF	241.00° Mag 219.00° True	N/A	N/A	N/A	N/A	N/A	21.00	N/A	N/A	RNP 1.0
030	ENROUTE	N	N/A	N/A	TF	278.00° Mag 255.70° True	N/A	N/A	+FL240	N/A	N/A	31.00	N/A	( *)	RNP 1.0
040	ENROUTE	N	N/A	NAXOP	TF	278.00° Mag 255.70° True	N/A	N/A	N/A	N/A	N/A	12.90	N/A	N/A	RNP 1.0
010	ENROUTE	N	N/A	IH	IF	N/A	N/A	- FL080	+5000	N/A	N/A	N/A	N/A	N/A	N/A
020	ENROUTE	N	N/A	N/A	TF	279.00° Mag 256.50° True	N/A	N/A	+FL220	N/A	N/A	43.60	N/A	( *)	RNP 1.0
030	ENROUTE	N	N/A	UMBAD	TF	279.00° Mag 256.50° True	N/A	N/A	N/A	N/A	N/A	12.90	N/A	N/A	RNP 1.0
010	ENROUTE	N	N/A	IH	IF	N/A	N/A	- FL080	+5000	N/A	N/A	N/A	N/A	N/A	N/A
020	ENROUTE	N	N/A	N/A	TF	334.00° Mag 311.30° True	N/A	N/A	+FL100	N/A	N/A	13.50	N/A	( *)	RNP 1.0
030	ENROUTE	N	N/A	N/A	TF	334.00° Mag 311.30° True	N/A	N/A	+FL140	N/A	N/A	8.80	N/A	( *)	RNP 1.0
040	ENROUTE	N	N/A	N/A	TF	334.00° Mag 311.40° True	N/A	N/A	+FL200	N/A	N/A	12.40	N/A	( *)	RNP 1.0
050	ENROUTE	N	N/A	LIXEP	TF	334.00° Mag 311.40° True	N/A	N/A	N/A	N/A	N/A	4.60	N/A	N/A	RNP 1.0
060	ENROUTE	N	N/A	SIDUR	TF	278.00° Mag 255.90° True	N/A	N/A	N/A	N/A	N/A	30.90	N/A	N/A	RNP 1.0

(\*) Restrição de altitude somente / Altitude restriction only

Ident	Latitude / Longitude (WGS84) DD:MM:SS.SS
TH02R	S 22:54:59.48W 43:09:44.78
TH20L	S 22:54:16.56W 43:09:47.56
RJ006	S 22:55:17.51W 43:09:43.61
RJ076	S 22 56 21.22W 43 08 52.00
RJ078	S 22 56 59.34W 43 07 54.26
RJ016	S 22 53 46.51W 43 09 49.51
RJ022	S 22 52 12.37W 43 07 54.06
RJ077	S 22 55 13.19W 43 08 25.76
RJ026	S 22 53 41.10W 43 08 12.21
RJ079	S 22 58 14.61W 43 09 35.75
MALDU	S 22:53:06.92W 43:02:41.50
UTGAT	S 22:56:15.00W 43:02:06.00
EVS0B	S 22:59:54.64W 43:05:22.58
TIVRO	S 23:20:08.73W 43:23:06.88
BITAK	S 23:37:48.60W 43:38:16.80
NAXOP	S 23:30:54.70W 44:09:24.54
UMBAD	S 23:16:55.53W 44:08:29.34
IH	S 23:03:49.80W 43:08:45.60

COD	Meaning
+	AT OR ABOVE
-	AT OR BELOW
@	AT
R	RECOMMENDED
B	BETWEEN
=	AS ASSIGNED
SDF	STEPDOWN FIX
Y	YES
N	NO
L	LEFT
R	RIGHT
N/A	NOT APPLICABLE
LTP	LANDING THRESHOLD POINT
FTP	FICTITIOUS THRESHOLD POINT
*	FICTITIOUS POINT

DER	Latitude / Longitude (WGS84) DD:MM:SS.SS	Elevation (FT)
02R	S 22:54:16.55 W 43:09:47.56	9.19
20L	S 22:54:59.48 W 43:09:44.78	9.51