

INSTRUMENT APPROACH
CHART (IAC)

SÃO PAULO / Congonhas (SBSP)

AD ELEV: 2631'

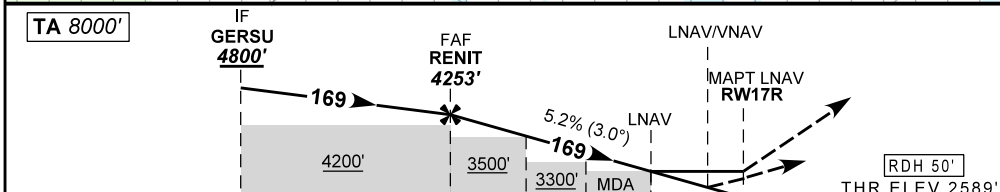
RNAV (GNSS) Z RWY17R

D-ATIS 127.65	APP SÃO PAULO 129.75 119.15 120.45 120.85 133.85 121.50	TWR SÃO PAULO 118.05 127.15 121.50	GNDC SÃO PAULO 121.90
------------------	---	---------------------------------------	--------------------------

N/A	FINAL CRS 169°	FAF 4253'	LNAV/VNAV DA / (OCH): 3036' (450)'	LNAV MDA / (OCH): 3100' (520)'
-----	-------------------	--------------	---------------------------------------	-----------------------------------

APCH Perdida: Subir para **6000'** gradiente MNM 5%. Manter proa **169** até cruzar **4000'**. Curvar à DIREITA rumo **349** para espera em **KOMGU**.
Missed APCH: Climb to **6000'** MNM gradient 5%. Maintain course **169** until passing **4000'**. Turn RIGHT course **349** to **KOMGU** for holding.

RMK: 1) Para sistemas BARO-VNAV não compensados, procedimento LNAV/VNAV não autorizado abaixo de 0°C.
1) For uncompensated systems BARO-VNAV, LNAV/VNAV procedure not authorized below 0°C.



TO THR 17R (NM)	7.8	5.1	3.0	2.1	1.4	1.2	0.0	THR ELEV 2589'
-----------------	-----	-----	-----	-----	-----	-----	-----	----------------

	RENIT	4.0	3.0	2.0	1.4	RW17R	KT	090	110	130	150	170	190
	4253	3913	3594	3276	3100	ALT	FPM	500	600	700	800	NA	
	1664	1324	1005	687	511	(HGT)	FAF-MAPT			NA			

STRAIGHT-IN	CAT	A	B	C	D	E
LNAV/VNAV	DA / (OCH) / TETO	3036' / (450)' / 500'				
	ALSF/NO ALSF/RVR ALSF (m)	1400 / 2100 / NIL				
LNAV	MDA / (OCH) / TETO	3100' / (520)' / 600'				
	ALSF/NO ALSF/RVR ALSF (m)	1400 / 2100 / NIL		1600 / 2400 / NIL		
CIRCLING	MDA / (OCH) / TETO	NA				
	VIS (m)	NA				

CHANGES: PROC.

SUP N140 09 NOV 17 TIL 07 DEC 17

DEPARTAMENTO DE CONTROLE DO ESPAÇO AÉREO

SBSP_IAC_00M 1

IAC RNAV (GNSS) Z RWY 17R

INTENCIONALMENTE EM BRANCO
INTENTIONALLY LEFT BLANK