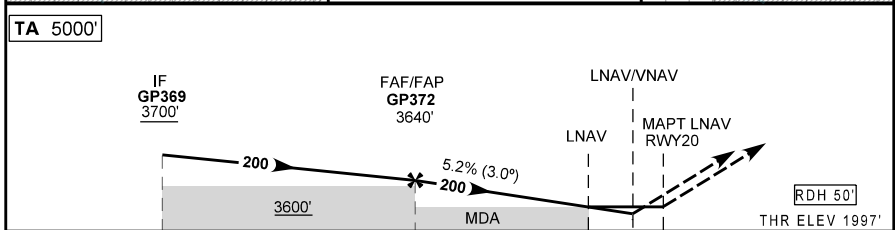
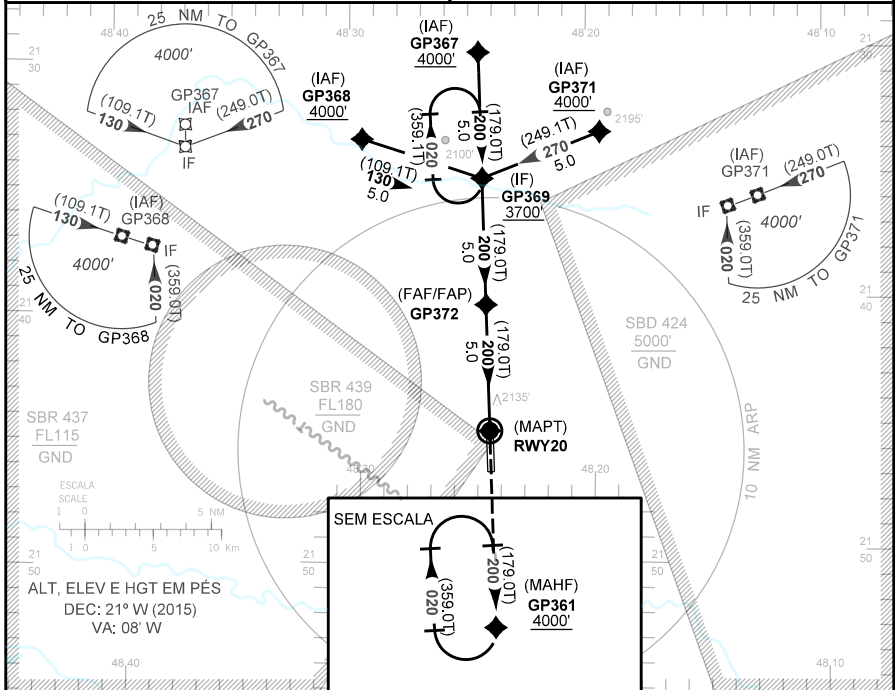


CARTA DE APROXIMAÇÃO
POR INSTRUMENTOS (IAC)
INSTRUMENT APPROACH CHART (IAC)

GAVIÃO PEIXOTO / EMBRAER - Unidade Gavião Peixoto (SBGP)

RNAV(GNSS) RWY 20

AD ELEV: 1998'	ATIS NIL	AFIS GAVIÃO PEIXOTO 118.95	TWR NIL	GNDC GAVIÃO PEIXOTO 121.80
RMK: 1) Acft não compensadas Baro-VNAV. LNAV/VNAV NÃO AUTORIZADO abaixo de -10°C e acima de 50°C. 2) Espera em GP369 a 3700' ou acima.		Aproximação Perdida: Subir para 4000' no rumo 200 até GP361.		



TO THR 20 (NM)	10.0	5.0	1.1	1.2	0.0	THR ELEV 1997'
----------------	------	-----	-----	-----	-----	----------------

5.0	4.0	3.0	2.0	1.1	RWY20	KT	090	110	130	150	170	190
3640	3320	3002	2684	2400	ALT	FPM	500	600	700	800	900	1000
1642	1324	1005	687	410	(HGT)	FAF-MAPT	NA					

POSO DIRETO STRAIGHT-IN	CAT	A	B	C	D	E
	DA / OCH / TETO	2340 / 350 / 400				
LNAV/VNAV	ALS/NO ALS/ RVR ALS (m)	NIL / 1600 / NIL				
	MDA / OCH / TETO	2400 / 410 / 500				
LNAV	ALS/NO ALS/RVR ALS (m)	NIL / 1600 / NIL		NIL / 1900 / NIL		
	MDA / OCH / TETO	NA				
CIRCULAR TO CIRCLE	MDA / OCH / TETO	NA				
	VIS (m)	NA				

MODIFICAÇÕES: PROC. LAYOUT



CODING TABLE

This table supplements information contained in the chart to which it is associated. In spite of the fact the classification of waypoints (fly-by / flyover), courses, distances, altitudes, level and speed restrictions are mandatory, the providers may use the information as they find appropriate in order to code procedures. In other words, in case any particular coding is applied, it is mandatory for it to reflect the procedure published in the chart.

Identification	Aerodrome	Chart Code	AMDT
IAC RNAV (GNSS) RWY 20	GAVIÃO PEIXOTO / EMBRAER - Unidade Gavião Peixoto (SBGP)	GP00C-03	SUP AIP N139 12 NOV 15 TIL 10 DEC 15

Seq	Transition	Path Terminator	Navaid / Fix / Waypoint	Function	Flyover (Y/N)	Navaid	Course Mag (True)	Dist (NM)	Turn (L/R)	IAS (KT)	Altitude (FT)	Gradient (%)	Perform.
010	Approach	IF	GP368	IAF	N	---	---	---	---	---	---	---	---
020	Approach	TF	GP369	IF	N	---	130 (129.1)	5.0	---	---	+3700	---	RNP APCH
010	Approach	IF	GP367	IAF	N	---	---	---	---	---	---	---	---
020	Approach	TF	GP369	IF	N	---	200 (179.0)	5.0	---	---	+3700	---	RNP APCH
010	Approach	IF	GP371	IAF	N	---	---	---	---	---	---	---	---
020	Approach	TF	GP369	IF	N	---	270 (249.0)	5.0	---	---	+3700	---	RNP APCH
010	Final	IF	GP369	IF	N	---	---	---	---	---	---	---	---
020	Final	TF	GP372	FAF	N	---	200 (179.0)	5.0	---	---	3620	---	RNP APCH
030	Final	TF	RWY20	MAPT	Y	---	20 (179.0)	5.0	---	---	+2047	5.24	RNP APCH with BARO VNAV

010	Missed Ap.	IF	RWY20	MAPT	Y	---	---	---	---	---	---	---	RNP APCH with BARO VNAV
020	Missed Ap.	DF	GP361	MAHF	Y	---	---	---	---	---	+4000	---	RNP APCH
030	Missed Ap.	HM	GP361	MAHF	Y	---	199 (179.0)	1 min	R	---	+4000	---	RNP APCH

IDENT	Latitude / Longitude (WGS84) DD:MM:SS.SS
GP361	S 22:01:45.30W 48:24:01.50
GP367	S 21:30:01.60W 48:24:35.60
GP368	S 21:33:24.40W 48:29:34.40
GP369	S 21:35:02.70W 48:24:30.20
GP371	S 21:33:14.90W 48:19:29.60
GP372	S 21:40:03.70W 48:24:24.80
RWY20 (MAPT)	S 21:45:04.72W 48:24:19.43

COD	Meaning
+	AT OR ABOVE
-	AT OR BELOW
=	MANDATORY
	RECOMMENDED
SDF	STEPDOWN FIX
Y	YES
N	NO
L	LEFT
R	RIGHT

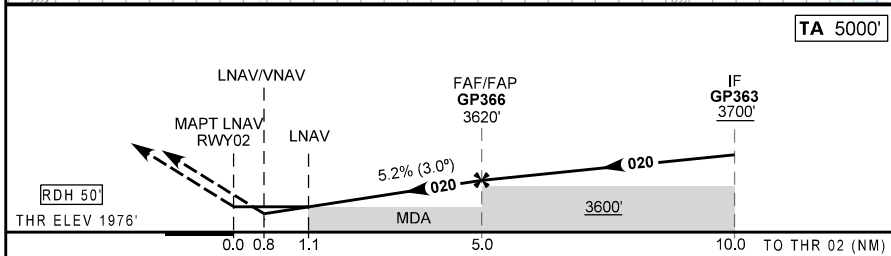
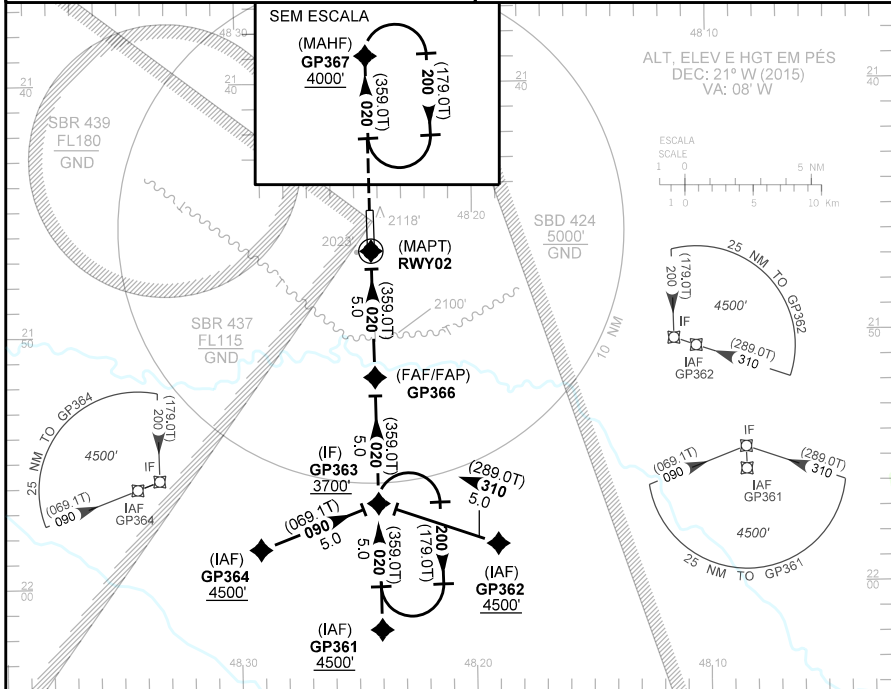
IAC RWY 20 2/2 PÁG

CARTA DE APROXIMAÇÃO
POR INSTRUMENTOS (IAC)
INSTRUMENT APPROACH CHART (IAC)

GAVIÃO PEIXOTO / EMBRAER - Unidade Gavião Peixoto (SBGP)

RNAV(GNSS) RWY 02

AD ELEV: 1998'	ATIS NIL	AFIS GAVIÃO PEIXOTO 118,95	TWR NIL	GNDC GAVIÃO PEIXOTO 121.80
RMK: 1) ACFT não compensadas Baro-VNAV, LNAV/VNAV NÃO AUTORIZADO abaixo de -10°C e acima de 50°C. 2) Espera em GP363 a 3700' ou acima.			Aproximação Perdida: Subir para 4000' no rumo 020 até GP367.	



RWY02	1.1	2.0	3.0	4.0	5.0	KT	090	110	130	150	170	190
	ALT	2370	2663	2981	3300	3620	FPM	500	600	700	800	900
(HGT)	400	687	1005	1324	1642	FAF-MAPT	NA					

POUSO DIRETO STRAIGHT-IN	CAT	A	B	C	D	E
	DA / OCH / TETO			2290 / 320 / 400		
LNAV/VNAV	ALS/NO ALS/ RVR ALS (m)	NIL / 1600 / NIL				
	MDA / OCH / TETO	2370 / 400 / 400				
LNAV	ALS/NO ALS/ RVR ALS (m)	NIL / 1600 / NIL		NIL / 1800 / NIL		
	MDA / OCH / TETO	NA				
CIRCULAR TO CIRCLE	MDA / OCH / TETO	NA				
	VIS (m)	NA				

MODIFICAÇÕES: PROC. LAYOUT



CODING TABLE

This table supplements information contained in the chart to which it is associated. In spite of the fact the classification of waypoints (fly-by / flyover), courses, distances, altitudes, level and speed restrictions are mandatory, the providers may use the information as they find appropriate in order to code procedures. In other words, in case any particular coding is applied, it is mandatory for it to reflect the procedure published in the chart.

Identification	Aerodrome	Chart Code	AMDT
IAC RNAV (GNSS) RWY 02	GAVIÃO PEIXOTO / EMBRAER - Unidade Gavião Peixoto (SBGP)	GP00B-03	SUP AIP N139 12 NOV 15 TIL 10 DEC 15

Seq	Transition	Path Terminator	Navaid / Fix / Waypoint	Function	Flyover (Y/N)	Navaid	Course Mag (True)	Dist (NM)	Turn (L/R)	IAS (KT)	Altitude (FT)	Gradient (%)	Perform.
010	Approach	IF	GP364	IAF	N	---	---	---	---	---	---	---	---
020	Approach	TF	GP363	IF	N	---	090 (069.1)	5.0	---	---	+3700	---	RNP APCH
010	Approach	IF	GP361	IAF	N	---	---	---	---	---	---	---	---
020	Approach	TF	GP363	IF	N	---	020 (359.0)	5.0	---	---	+3700	---	RNP APCH
010	Approach	IF	GP362	IAF	N	---	---	---	---	---	---	---	---
020	Approach	TF	GP363	IF	N	---	310 (289.0)	5.0	---	---	+3700	---	RNP APCH
010	Final	IF	GP363	IF	N	---	---	---	---	---	---	---	---
020	Final	TF	GP366	FAF	N	---	020 (359.0)	5.0	---	---	3620	---	RNP APCH
030	Final	TF	RWY02	MAPT	Y	---	020 (359.0)	5.0	---	---	+2026	5.24	RNP APCH with BARO VNAV

010	Missed Ap.	IF	RWY02	MAPT	Y	---	---	---	---	---	---	---	RNP APCH with BARO VNAV
020	Missed Ap.	DF	GP367	MAHF	Y	---	---	---	---	---	+4500	---	RNP APCH
030	Missed Ap.	HM	GP367	MAHF	Y	---	020 (359.0)	1 min	R	---	+4500	---	RNP APCH

IDENT	Latitude / Longitude (WGS84) DD:MM:SS.SS
GP361	S 22:01:45.30W 48:24:01.50
GP362	S 21:58:22.40W 48:19:01.80
GP363	S 21:56:44.30W 48:24:06.90
GP364	S 21:58:31.90W 48:29:08.30
GP366	S 21:51:43.30W 48:24:12.30
GP367	S 21:30:01.60W 48:24:35.60
RWY 02	S 21:46:42.24W 48:24:17.68

COD	Meaning
+	AT OR ABOVE
-	AT OR BELOW
=	MANDATORY
	RECOMMENDED
SDF	STEPDOWN FIX
Y	YES
N	NO
L	LEFT
R	RIGHT