

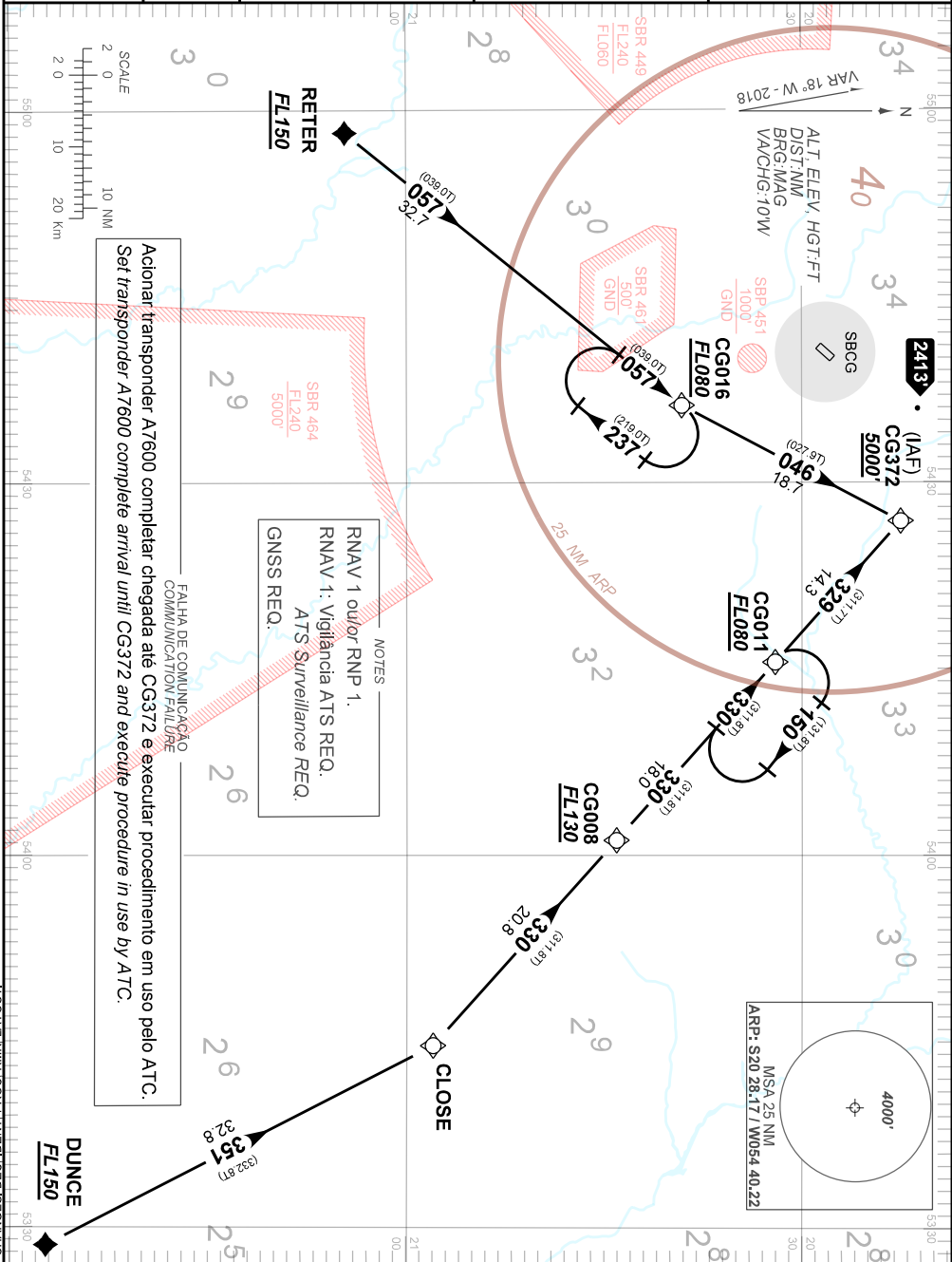
STANDARD ARRIVAL CHART
INSTRUMENT (STAR)

CAMPO GRANDE / Campo Grande, INTL (SBCG)
RWY 24

AD ELEV: 1834'

RNAV DUNCE 1B - RETER 1B

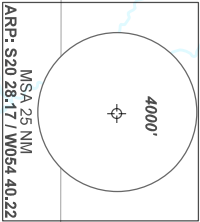
TA 5000'	D-ATIS 127.60	ACC CURITIBA 124.275 128.35 133.50 135.80 121.50	APP CAMPO GRANDE 119.35 119.65 120.20 121.00 121.50	TWR CAMPO GRANDE 118.10 121.50
----------	------------------	--	---	-----------------------------------



Acionar transponder A7600 completar chegada até CG372 e executar procedimento em uso pelo ATC.
Set transponder A7600 complete arrival until CG372 and execute procedure in use by ATC.

NOTES
RNAV 1 out/or RNP 1.
RNAV 1: Vigilância ATS REQ.
ATS Surveillance REQ.
GNSR REQ.

FALHA DE COMUNICAÇÃO
COMUNICAÇÃO FALHA USE



CHANGES: DEC. IDENT. PROC. RNM. LAYOUT.

INTENCIONALMENTE EM BRANCO
INTENTIONALLY LEFT BLANK