

INSTRUMENT APPROACH
CHART (IAC)

FLORIANÓPOLIS / Hercílio Luz, INTL (SBFL)

RNAV(GNSS) Z RWY 32

AD ELEV: 17'

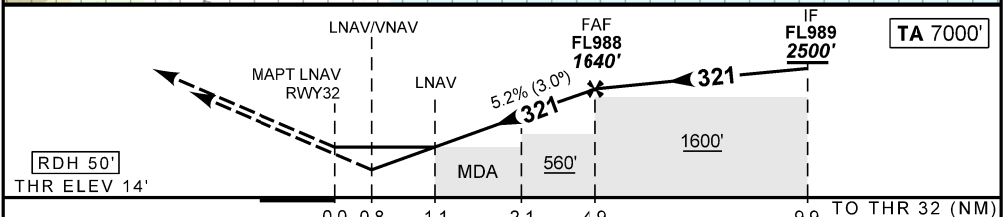
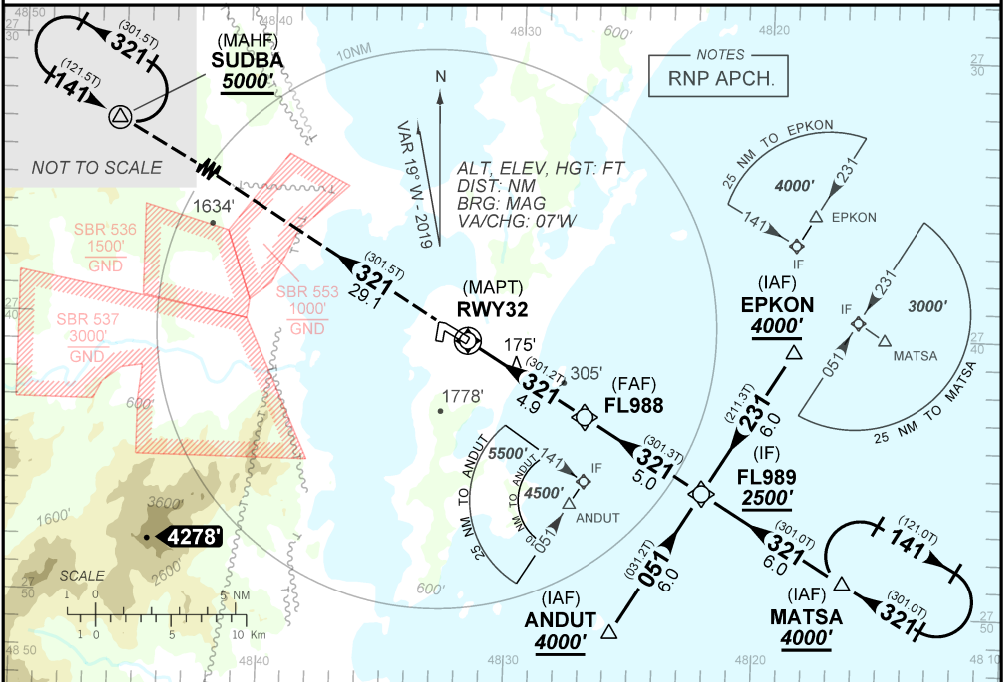
D-ATIS 127.45	APP FLORIANÓPOLIS 119.50 119.65 128.95 129.45 129.60 121.50	TWR FLORIANÓPOLIS 118.70 122.80 (MIL) 121.50	GNDC FLORIANÓPOLIS 121.70
N/A	FINAL CRS 321°	FAF 1640'	LNAV/VNAV DA / (OCH): 330' / (320')
		LNAV MDA / (OCH): 430' / (420')	

APCH Perdida: Subir para **5000'** rumo **321°** para espera em SUDBA.

Missed APCH: Climb to **5000'** on course **321°** to SUDBA for holding.

RMK: 1) Para sistemas BARO-VNAV não compensados, procedimento LNAV/VNAV não autorizado abaixo de -10°C.

1) For uncompensated systems BARO-VNAV, LNAV/VNAV procedure not authorized below -10°C.



RWY 32	1.1	2.1	3.0	4.0	FL988														
ALT	430	733	1019	1338	1640														
(HGT)	416	719	1005	1324	1626														

STRAIGHT-IN	CAT	A	B	C	D	E
	DA / (OCH)		330' / (320')			
LNAV/VNAV	ALS / NO ALS / RVR ALS (m)		NIL / 1400 / NIL			NA
	MDA / (OCH)		430' / (420')			
LNAV	ALS / NO ALS / RVR ALS (m)	NIL / 1600 / NIL		NIL / 1900 / NIL		
	MDA / (OCH)					
CIRCLING	VIS (m)					
				NA		

CHANGES DEC. MINM. THR.



CODING TABLE

IAC RNAV (GNSS) Z RWY 32					FLORIANÓPOLIS / Hercílio Luz, INTL (SBFL)							SBFL_IAC_00V		12 SEP 19 TIL 07 NOV 19	
Seq Num	IAP Transition Identifier	Fly Over	Rec Navaid	Fix Ident	Path and Terminator	Course Angle	Turn	Upper Limit Altitude (FT)	Lower Limit Altitude (FT)	Speed Limit (KT)	Speed Limit Description	TM DST	VA (°)	Role Of TheFix	Navigation Specification
10	APPCH	N/A	N/A	MATSA	IF	N/A	N/A	N/A	+4000	N/A	N/A	N/A	N/A	IAF	RNP APCH
20	APPCH	N	N/A	FL989	TF	320.68° Mag 301.03° True	N/A	N/A	+2500	N/A	N/A	6.00	N/A	IF	RNP APCH
10	APPCH	N/A	N/A	EPKON	IF	N/A	N/A	N/A	+4000	N/A	N/A	N/A	N/A	IAF	RNP APCH
20	APPCH	N	N/A	FL989	TF	230.95° Mag 211.30° True	N/A	N/A	+2500	N/A	N/A	6.01	N/A	IF	RNP APCH
10	APPCH	N/A	N/A	ANDUT	IF	N/A	N/A	N/A	+4000	N/A	N/A	N/A	N/A	IAF	RNP APCH
20	APPCH	N	N/A	FL989	TF	50.81° Mag 31.16° True	N/A	N/A	+2500	N/A	N/A	6.00	N/A	IF	RNP APCH
10	FINAL	N/A	N/A	FL989	IF	N/A	N/A	N/A	+2500	N/A	N/A	N/A	N/A	IF	RNP APCH
20	FINAL	N	N/A	FL988	TF	320.87° Mag 301.25° True	N/A	N/A	R1640	N/A	N/A	5.00	N/A	FAF	RNP APCH
30	FINAL	N	N/A	FL907*	TF	320.76° Mag 301.15° True	N/A	N/A	R733	N/A	N/A	2.84	-3.00	SDF	RNP APCH
40	FINAL	Y	N/A	RWY32	TF	320.77° Mag 301.18° True	N/A	N/A	@64	N/A	N/A	2.10	-3.00	LTP	RNP APCH
10	MA	N	N/A	SUDBA	TF	320.96° Mag 301.54° True	N/A	N/A	+5000	N/A	N/A	29.11	N/A	MAHF	RNP APCH
20	MA	Y	N/A	SUDBA	HM	140.95° Mag 121.51° True	L	N/A	+5000	N/A	N/A	1.00 min	N/A	MAHF	RNP APCH

: *FICTITIOUS POINT (FOR CODING PURPOSE ONLY).

Ident	Latitude / Longitude (WGS84) DD:MM:SS.SS
MATSA	S 27:48:52.80W 48:16:26.40
EPKON	S 27:40:37.74W 48:18:43.34
ANDUT	S 27:50:55.66W 48:25:44.54
FL989	S 27:45:46.80W 48:22:14.40
FL988	S 27:43:10.80W 48:27:03.60
FL907*	S 27:41:42.37W 48:29:47.99
RWY32	S 27:40:36.98W 48:31:49.44
SUDBA	S 27:25:23.52W 48:59:46.12

COD	Meaning
+	AT OR ABOVE
-	AT OR BELOW
@	AT
R	RECOMMENDED
B	BETWEEN
=	AS ASSIGNED
SDF	STEPDOWN FIX
Y	YES
N	NO
L	LEFT
R	RIGHT
N/A	NOT APPLICABLE
LTP	LANDING THRESHOLD POINT
FTP	FICTITIOUS THRESHOLD POINT
*	FICTITIOUS POINT