

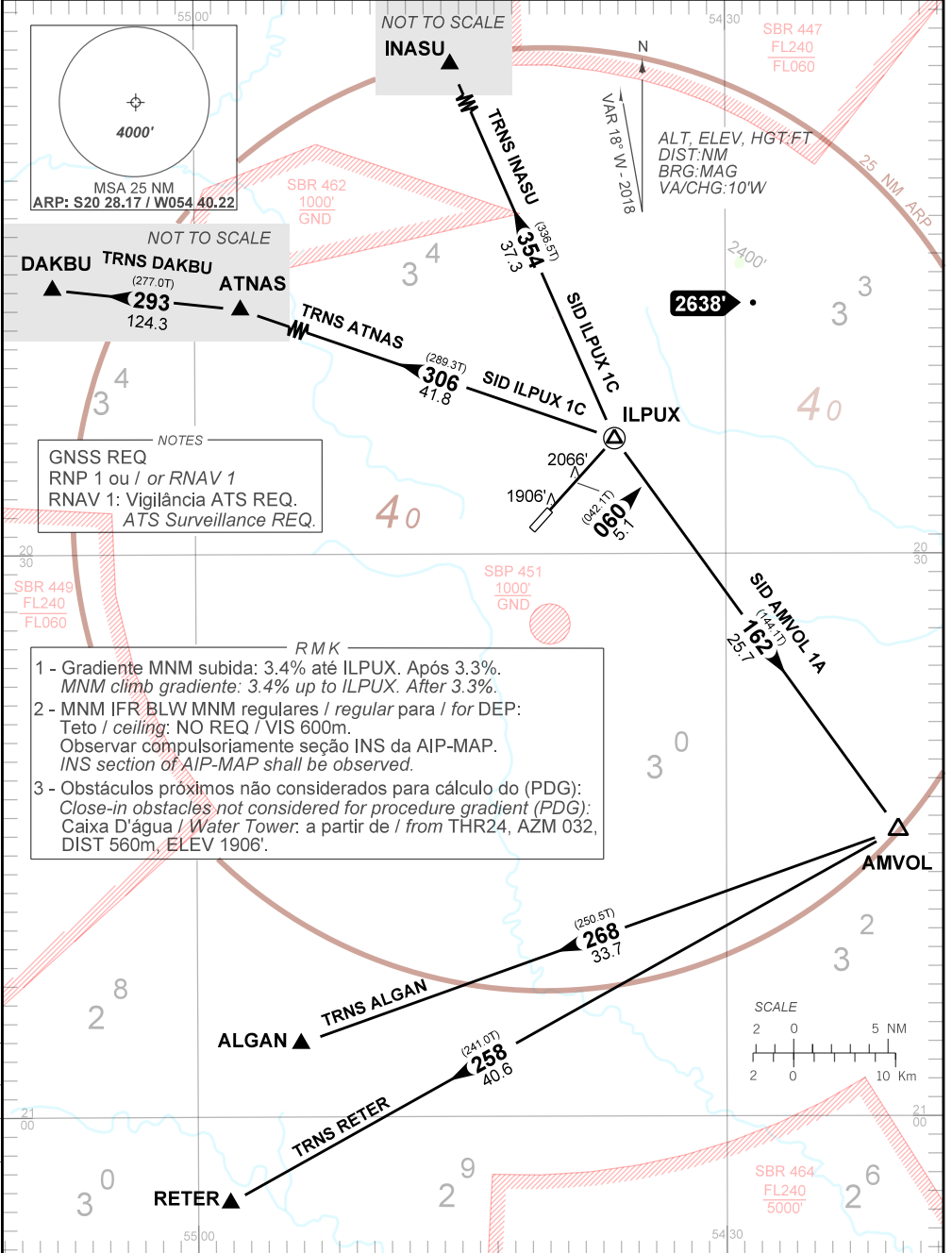
STANDARD DEPARTURE CHART
INSTRUMENT (SID)

CAMPO GRANDE / Campo Grande, INTL (SBCG)
RWY 06

AD ELEV: 1834'

RNAV AMVOL 1A - ILPUX 1C

| | | | |
|----------|-----------------------------------|--|---|
| TA 5000' | TWR CAMPO GRANDE 118.10 121.50 | APP CAMPO GRANDE 119.35 119.65 120.20 121.00 121.50 | ACC CURITIBA 128.15 124.85 128.35 135.80 129.25 123.70 121.50 |
|----------|-----------------------------------|--|---|



NOTES
GNSS REQ
RNP 1 ou / or RNAV 1
RNAV 1: Vigilância ATS REQ.
ATS Surveillance REQ.

RMK
1 - Gradiente MNM subida: 3.4% até ILPUX. Após 3.3%.
MNM climb gradient: 3.4% up to ILPUX. After 3.3%.
2 - MNM IFR BLW MNM regulares / regular para / for DEP:
Teto / ceiling: NO REQ / VIS 600m.
Observar compulsoriamente seção INS da AIP-MAP.
INS section of AIP-MAP shall be observed.
3 - Obstáculos próximos não considerados para cálculo do (PDG):
Caixa D'água / Water Tower: a partir de / from THR24, AZM 032,
DIST 560m, ELEV 1906'.

CHANGES: DEC. IDENT. RMK PROC. LAYOUT.

INTENCIONALMENTE EM BRANCO
INTENTIONALLY LEFT BLANK