

**INSTRUMENT APPROACH CHART (IAC)**

**RIO DE JANEIRO / Galeão - Antônio Carlos Jobim, INTL (SBGL)**

**ILS R ou/or LOC R RWY 15**

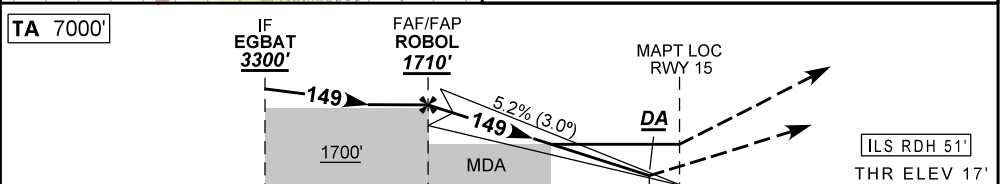
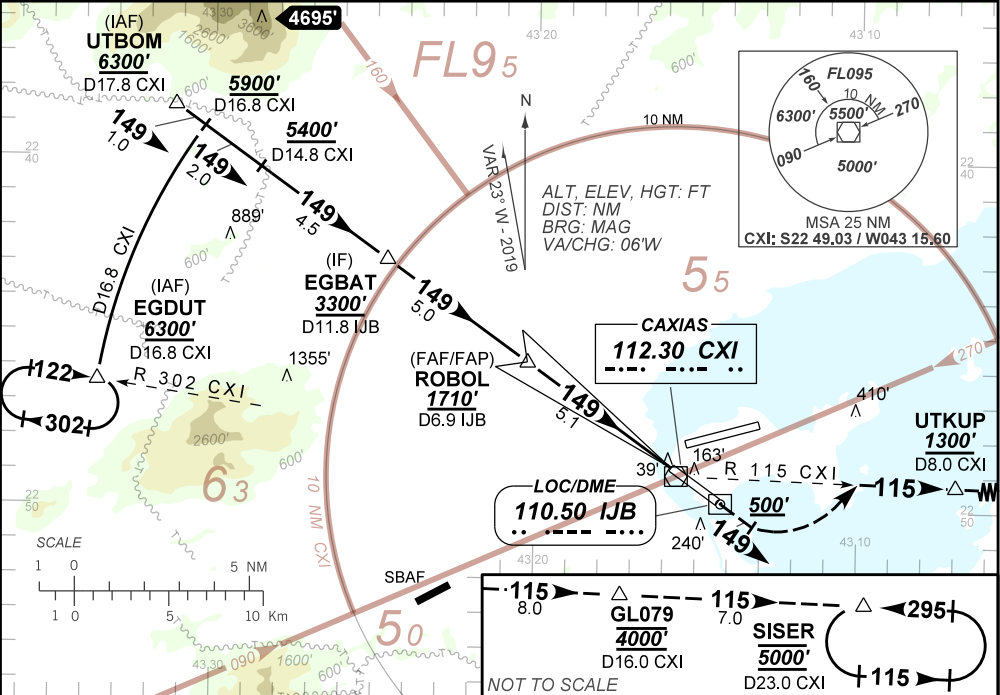
**AD ELEV: 28'**

D-ATIS <b>127.60</b>	APP RIO <b>133.30 126.20 129.80 125.95 128.90</b> <b>119.35 134.40 121.25 121.50</b>	TWR GALEÃO <b>118.00 118.20 121.50</b>	GND C GALEÃO <b>121.65 128.35</b>
-------------------------	--	---	--------------------------------------

LOC IJB <b>110.50 MHz</b>	FINAL CRS <b>149°</b>	FAF <b>1710'</b>	CAT I DA / (OCH): <b>REFER TO MNM</b>	LOC ONLY MDA / (OCH): <b>730' / (713')</b>
------------------------------	--------------------------	---------------------	--	---

APCH Perdida: Subir para **5000'**. Manter rumo **149°** até **500'**. Curvar à ESQUERDA, RDL 115 CXI até UTKUP. Após, manter RDL 115 CXI até SISER para espera.  
 Missed APCH: Climb to **5000'**. Maintain course **149°** until **500'**. Turn LEFT 115 CXI RDL up to UTKUP. After, maintain 115 RDL CXI up to SISER for holding.

RMK: NIL.



TO THR 15 (NM)	10.1	5.1	2.1	0.4
TO IJB (NM)	11.9	6.9	3.9	2.2

ROBOL	4.0	3.0	2.1	1.0	0.4	RWY15	KT	090	110	130	150	170	190
1710	1360	1040	730	390	217	ALT	FPM	500	600	700	800	900	1000
1694	1343	1023	713	373	200	(HGT)	FAF-MAPT			NA			

STRAIGHT-IN	CAT	A	B	C	D	E
CAT I	DA / (OCH)	217' / (200')				259' / (242')
	ALS/NO ALS/ RVR ALS (m)	800 / 1200 / 700				800 / 1300 / 700
LOC ONLY	MDA / (OCH)	730' / (713')				
	ALS/NO ALS/RVR ALS (m)	800 / 1600 / 700		2700 / 3400 / NIL		
CIRCLING	MDA / (OCH)	NA				
	VIS (m)	NA				

CHANGES: NEW CHART.

**INTENCIONALMENTE EM BRANCO**  
INTENTIONALLY LEFT BLANK