

AD ELEV: 28'

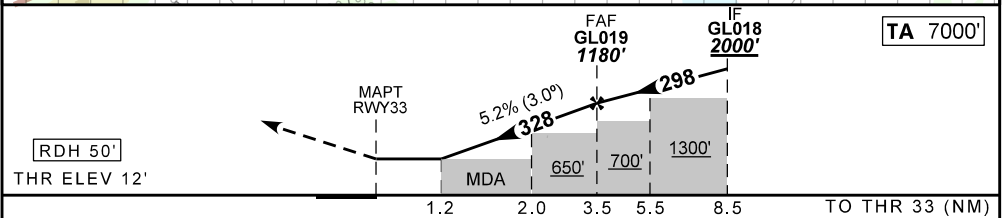
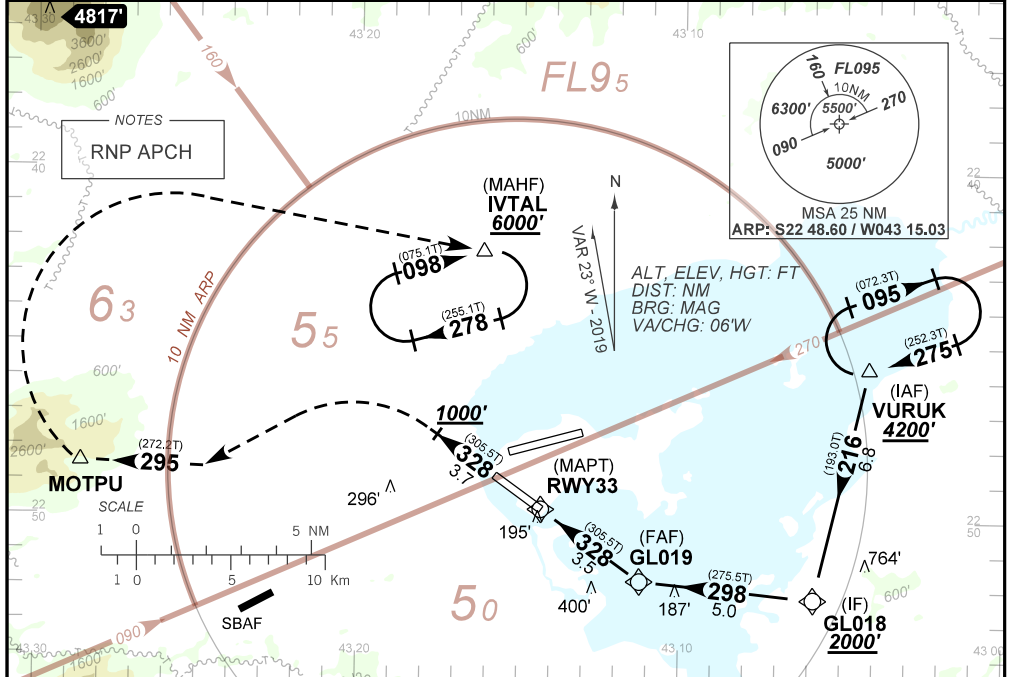
RNAV(GNSS) W RWY 33

D-ATIS 127.60	APP RIO 126.20 133.30 129.80 125.95 128.90 119.35 134.40 121.25 121.50	TWR GALEÃO 118.00 118.20 121.50	GNDC GALEÃO 121.65 128.35
N/A	FINAL CRS 328°	FAF: 1180'	N/A
		LNAV MDA / (OCH): 460' / (450')	

APCH Perdida: Subir para **6000'**. Gradiente MNM de 5%. Manter rumo **323** até **1000'**. Após, curvar à ESQUERDA para interceptar o curso **295** até MOTPU. Então, curvar à DIREITA direto IVTAL para espera.

Missed APCH: Climb to **6000'**. MNM climb gradient 5%. Maintain course **328** until **1000'**. LEFT turn to intercept course **295** up to MOTPU. Then, RIGHT turn direct to IVTAL for holding.

RMK: NIL.



RWY33	1.2	2.0	3.0	GL019					
ALT	460	700	1018	1180					
(HGT)	448	688	1006	1168					

KT	090	110	130	150	170	190
FPM	500	600	700	800	900	1000
FAF-MAPT	NA					

STRAIGHT-IN	CAT	A	B	C	D	E
LNAV	MDA / (OCH)	460' / (450')				
	ALS/NO ALS/ RVR ALS (m)	NIL / 1600 / NIL		NIL / 2100 / NIL		
CIRCLING	MDA / (OCH)	NA				
	VIS (m)	NA				

CHANGES: NEW CHART.

INTENCIONALMENTE EM BRANCO
INTENTIONALLY LEFT BLANK