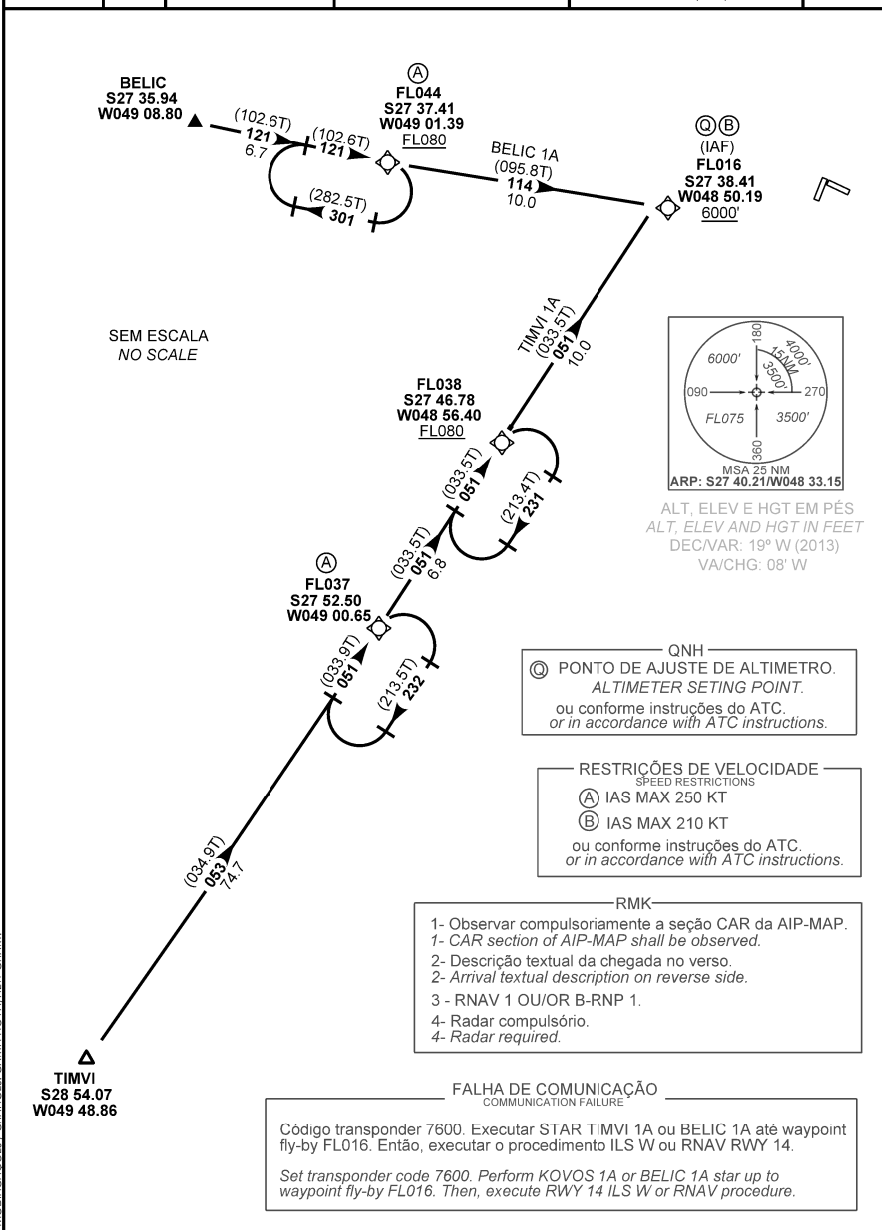


CARTA DE CHEGADA PADRÃO
 POR INSTRUMENTOS (STAR)
 STANDARD ARRIVAL CHART
 INSTRUMENT (STAR)

FLORIANÓPOLIS / HERCÍLIO LUZ, INTL (SBFL)
RWY 14
RNAV BELIC 1A - TIMVI 1A

TA 6000'	ATIS 127.45	ACC CURITIBA 123.70 126.10 121.50	APP FLORIANÓPOLIS 119.65 128.95 129.45 121.50	TWR FLORIANÓPOLIS 118.70 122.80 (MIL) 121.50	GNDCL 121.70
----------	-------------	-----------------------------------	---	--	--------------



MODIFICAÇÕES / CHANGES: CARTA NOVA/NEW CHART

DESCRIÇÃO TEXTUAL
TEXTUAL DESCRIPTION

I - CHEGADA BELIC 1A:

Após interseção fly-by BELIC, interceptar (TF) rumo 121 e voar 6.7 NM para o waypoint fly-by FL044. Passar o FL044 no FL080 ou acima. Após, manter (TF) rumo 114 e voar 10 NM até o waypoint fly-by FL016. Passar o FL016 a 6000' ou acima. Então, executar o procedimento autorizado pelo ATC.

II - CHEGADA TIMVI 1A:

Após interseção fly-by TIMVI, interceptar (TF) rumo 053 e voar 74.7 NM para o waypoint fly-by FL037. Após, manter (TF) rumo 051 e voar 6.8 NM até o waypoint fly-by FL038. Passar o FL038 no FL080 ou acima. Após, manter (TF) rumo 051 e voar 10 NM até o waypoint fly-by FL016. Passar o FL016 a 6000' ou acima. Então, executar o procedimento autorizado pelo ATC.

I - BELIC 1A ARRIVAL:

After intersection fly-by BELIC, intercept (TF) course 121 and fly 6.7 NM up to waypoint fly-by FL044. Cross FL044 at or above FL080, then maintain (TF) course 114 and fly 10.0 NM up to waypoint fly-by FL016. Cross FL016 at or above 6000', then execute procedure authorized by ATC.

II - TIMVI 1A ARRIVAL:

After intersection fly-by TIMVI, intercept (TF) course 053 and fly 74.7 NM up to waypoint fly-by FL037. Then maintain (TF) course 051 and fly 6.8 NM up to waypoint fly-by FL038. Cross FL038 at or above FL080, then maintain (TF) course 051 and fly 10 NM up to waypoint fly-by FL016. Cross FL016 at or above 6000', then execute procedure authorized by ATC.

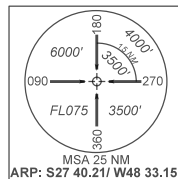
CARTA DE CHEGADA PADRÃO
POR INSTRUMENTOS (STAR)

FLORIANÓPOLIS / HERCÍLIO LUZ, INTL (SBFL)

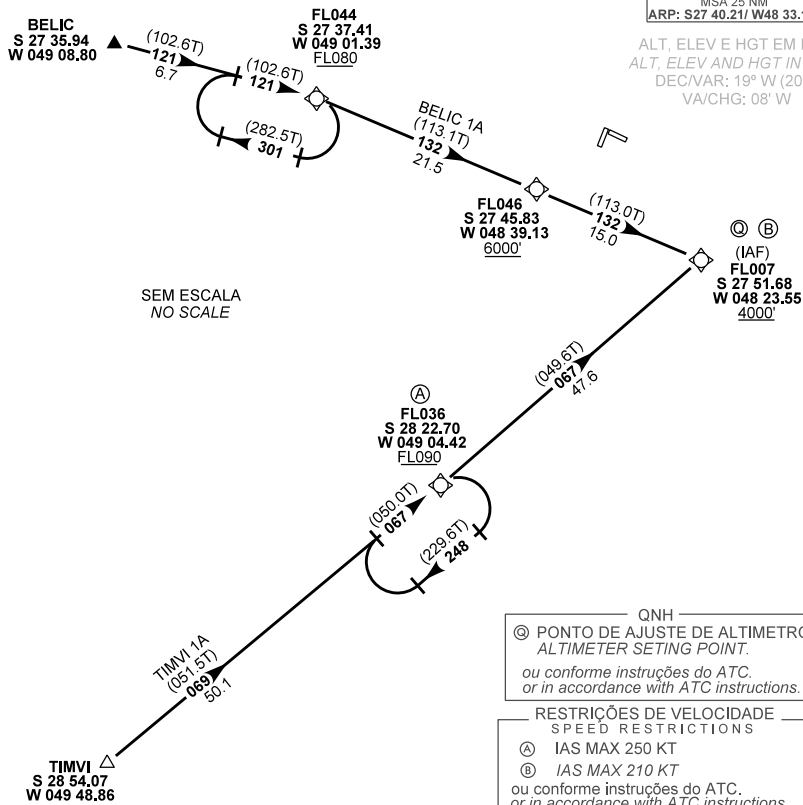
STANDARD ARRIVAL CHART
INSTRUMENT (STAR)

RWY 32
RNAV BELIC 1A - TIMVI 1A

TA 6000'	ATIS 127.45	ACC CURITIBA 123.70 126.10 121.50	APP FLORIANÓPOLIS 119.65 128.95 129.45 121.50	TWR FLORIANÓPOLIS 118.70 122.80 (MIL) 121.50	GNDC 121.70
----------	-------------	-----------------------------------	---	--	-------------



ALT, ELEV E HGT EM PÉS
ALT, ELEV AND HGT IN FEET
DEC/VAR: 19° W (2013)
VA/CHG: 08' W



QNH
 © PONTO DE AJUSTE DE ALTIMETRO.
 ALTIMETER SETTING POINT.
 ou conforme instruções do ATC.
 or in accordance with ATC instructions.

RESTRIÇÕES DE VELOCIDADE
 SPEED RESTRICTIONS
 (A) IAS MAX 250 KT
 (B) IAS MAX 210 KT
 ou conforme instruções do ATC.
 or in accordance with ATC instructions.

—RMK—
 1- Observar compulsoriamente a seção CAR da AIP-MAP.
 1- CAR section of AIP-MAP shall be observed.
 2- Descrição textual da chegada no verso.
 2- Arrival textual description on reverse side.
 3 - RNAV 1 OU/OR B-RNP 1.
 4- Radar compulsório.
 4- Radar required.

MODIFICAÇÕES / CHANGES - CARTA NOVA/NEW CHART

DESCRIÇÃO TEXTUAL
TEXTUAL DESCRIPTION

I - CHEGADA BELIC 1A:

Após interseção fly-by BELIC, interceptar (TF) rumo 121 e voar 6.7 NM para o waypoint fly-by FL044. Após, passar o FL044 no FL080 ou acima. Após, curvar (TF) à direita rumo 132 e voar 21.5 NM para o waypoint fly-by FL046 a 6000' ou acima. Após, manter (TF) rumo 132 e voar 15.0 NM para o waypoint fly-by FL007. Passar o FL007 a 4000' ou acima. Então, executar o procedimento RNAV (GNSS) RWY 32.

II - CHEGADA TIMVI 1A:

Após interseção fly-by TIMVI, interceptar (TF) rumo 069 e voar 50.1 NM para o waypoint fly-by FL036. Após, passar o FL036 no FL090 ou acima. Após, manter (TF) rumo 067 e voar 47,6 NM para o waypoint fly-by FL007. Passar o FL077 a 4000' ou acima. Então, executar o procedimento RNAV (GNSS) RWY 32.

I - BELIC 1A ARRIVAL:

After intersection fly-by BELIC, intercept (TF) course 121 and fly 6.7 NM to waypoint fly-by FL044. Then, cross FL044 at or above FL080. Then, turn (TF) right course 132 and fly 21.5 NM to waypoint fly-by FL046. cross FL046 at or above 6000'. Then, maintain (TF) course 132 and fly 15.0 NM to waypoint fly-by FL007. Cross FL007 at or above 4000'. Then, execute RNAV (GNSS) procedure RWY 32.

II - TIMVI 1A ARRIVAL:

After intersection fly-by TIMVI, intercept (TF) course 069 and fly 50.1 NM to waypoint fly-by FL036. Then, cross FL036 at or above FL090. Then, maintain (TF) course 067 and fly 47.6 NM to waypoint fly-by FL007. Cross FL007 at or above 4000'. Then, execute RNAV (GNSS) procedure RWY 32.

FALHA DE COMUNICAÇÃO
COMMUNICATION FAILURE

Código transponder 7600. Executar STAR BELIC 1A ou TIMVI 1A até waypoint fly-by FL007. Então, executar o procedimento RNAV (GNSS) RWY 32.

Set transponder code 7600. Perform BELIC 1A or TIMVI 1A STAR up to waypoint fly-by FL007. Then, execute RNAV (GNSS) RWY 32 procedure.



TABELA DE CODIFICAÇÃO / CODING TABLE

Identification	Aerodrome	Chart Code	EMENDA
STAR RNAV BELIC 1A TIMVI 1A RWY 14	FLORIANÓPOLIS / Hercílio Luz, INTL (SBFL)	FL00J-04	SUP/SUPP N033/A014 05 MAR 15 TIL 02 APR 15

TRNS BELIC

Seq	Transition	Path Terminator	Navaid / Fix / WPT	Type / Function	Flyover (Y/N)	REC Navaid	Course Mag (True)	Dist (NM)	Turn	IAS (KT)	Altitude (FT)	Vertical Angle	Perform.
010	Rota Enroute	IF	BELIC	---	N	---	---	---	---	---	---	---	---
020	Rota Enroute	TF	FL044	---	N	---	121 (102.6T)	6.7	---	250	+FL080	---	RNAV 1 (ou/or) RNP 1
030	Rota Enroute	TF	FL016	---	N	---	114 (095.8T)	10.0	L	210	+6000	---	RNAV 1 (ou/or) RNP 1

TRNS TIMVI

Seq	Transition	Path Terminator	Navaid / Fix / WPT	Type / Function	Flyover (Y/N)	REC Navaid	Course Mag (True)	Dist (NM)	Turn	IAS (KT)	Altitude (FT)	Vertical Angle	Perform.
010	Rota Enroute	IF	TIMVI	---	N	---	---	---	---	---	---	---	---
020	Rota Enroute	TF	FL037	---	N	---	053 (034.9T)	74.7	---	250	---	---	RNAV 1 (ou/or) RNP 1
030	Rota Enroute	TF	FL038	---	N	---	051 (033.5T)	6.8	L	---	+FL080	---	RNAV 1 (ou/or) RNP 1
040	Rota Enroute	TF	FL016	---	N	---	051 (033.5T)	10.0	---	210	+6000	---	RNAV 1 (ou/or) RNP 1

COD	Significado / Meaning
+	at or above
-	at or below
=	mandatory
	recommended
SDF	Step Down Fix

Ident	Latitude / Longitude (WGS84) DD:MM:SS.SS
BELIC	S 27:35:56.40 / W 49:08:48.00
FL044	S 27:37:24.60 / W 49:01:23.40
FL016	S 27:38:24.60 / W 48:50:11.40
TIMVI	S 28:54:04.20 / W 49:48:51.60
FL037	S 27:52:30.00 / W 49:00:39.00
FL038	S 27:46:46.80 / W 48:56:24.00



TABELA DE CODIFICAÇÃO / CODING TABLE

Identification	Aerodrome	Chart Code	EMENDA
STAR RNAV BELIC 1A TIMVI 1A RWY 32	FLORIANÓPOLIS / Hercílio Luz, INTL (SBFL)	FL00L-02	SUP/SUPP N033/A014 05 MAR 15 TIL 02 APR 15

TRNS BELIC

Seq	Transition	Path Terminator	Navaid / Fix / WPT	Type / Function	Flyover (Y/N)	REC Navaid	Course Mag (True)	Dist (NM)	Turn	IAS (KT)	Altitude (FT)	Vertical Angle	Perform.
010	Rota Enroute	IF	BELIC	---	N	---	---	---	---	---	---	---	---
020	Rota Enroute	TF	FL044	---	N	---	121 (102.6T)	6.7	---	250	+FL080	---	RNAV 1 (ou/or) RNP 1
030	Rota Enroute	TF	FL046	---	N	---	132 (113.1T)	21.5	R	---	+6000	---	RNAV 1 (ou/or) RNP 1
040	Rota Enroute	TF	FL007	---	N	---	132 (113.0T)	15.0	---	210	+4000	---	RNAV 1 (ou/or) RNP 1

TRNS TIMVI

Seq	Transition	Path Terminator	Navaid / Fix / WPT	Type / Function	Flyover (Y/N)	REC Navaid	Course Mag (True)	Dist (NM)	Turn	IAS (KT)	Altitude (FT)	Vertical Angle	Perform.
010	Rota Enroute	IF	TIMVI	---	N	---	---	---	---	---	---	---	---
020	Rota Enroute	TF	FL036	---	N	---	069 (051.5)	50.1	---	250	+FL090	---	RNAV 1 (ou/or) RNP 1
030	Rota Enroute	TF	FL007	---	N	---	067 (049.6T)	47.6	L	210	+4000	---	RNAV 1 (ou/or) RNP 1

COD	Significado / Meaning
+	at or above
-	at or below
=	mandatory
	recommended
SDF	Step Down Fix

Ident	Latitude / Longitude (WGS84) DD:MM:SS.SS
BELIC	S 27:35:56.40 / W 49:08:48.00
FL044	S 27:37:24.60 / W 49:01:23.40
FL046	S 27:45:49.80 / W 48:39:07.80
FL007	S 27:51:36.60 / W 48:23:33.00
TIMVI	S 28:54:04.20 / W 49:48:51.60
FL036	S 28:22:42.00 / W 49:04:25.20