

**INSTRUMENT APPROACH
CHART (IAC)**

FLORIANÓPOLIS / Hercílio Luz, INTL (SBFL)

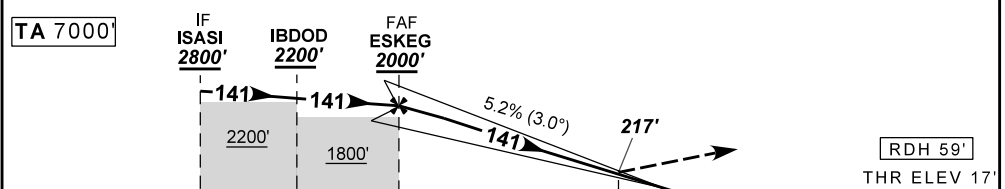
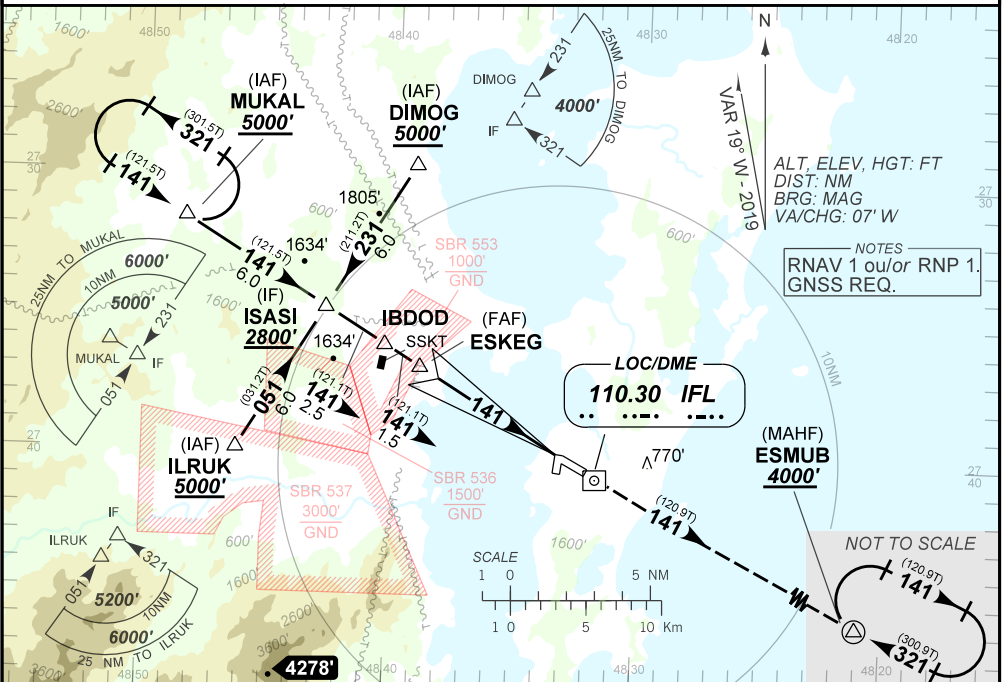
ILS Y RWY 14

AD ELEV: 17'

D-ATIS 127.45	APP FLORIANÓPOLIS 119.50 119.65 128.95 129.45 129.60 121.50	TWR FLORIANÓPOLIS 118.70 122.80 (MIL) 121.50	GNDCL FLORIANÓPOLIS 121.70
LOC IFL 110.30 MHz	FINAL CRS 141°	FAF 2000'	CAT I DA / (OCH): 217' / (200')

APCH Perdida: Subir para **4000'**. Manter rumo **141** até ESMUB para espera.
Missed APCH: Climb to **4000'**. Maintain course **141** up to ESMUB for holding.

RMK: NIL.



TO THR 14 (NM)	10.0	7.5	6.0	0.4	0.0
TO IFL (DME)	11.5	9.0	7.5	1.9	1.5

NIL	RWY15	KT	NIL
NIL	ALT	FPM	NIL
NIL	(HGT)	FAF-MAPT	NIL

STRAIGHT-IN	CAT	A	B	C	D	E
CAT I	DA / (OCH)	217' / (200')				NA
	ALS/NO ALS/ RVR ALS (m)	800 / 1200 / 700				
CIRCLING	MDA / (OCH)	NA				
	VIS (m)	NA				

CHANGES: DEC. MINIM.



CODING TABLE

IAC ILS Y RWY14					FLORIANÓPOLIS / Hercílio Luz, INTL (SBFL)							SBFL_IAC_00P		12 SEP 19 TIL 07 NOV 19	
Seq Num	IAP Transition Identifier	Fly Over	Rec Navaid	Fix Ident	Path and Terminator	Course Angle	Turn	Upper Limit Altitude (FT)	Lower Limit Altitude (FT)	Speed Limit (KT)	Speed Limit Description	TM DST	VA (°)	Role Of TheFix	Navigation Specification
10	APPCH	N/A	N/A	MUKAL	IF	N/A	N/A	N/A	+5000	N/A	N/A	N/A	N/A	IAF	RNAV 1
20	APPCH	N	N/A	ISASI	TF	140.98° Mag 121.46° True	N/A	N/A	+2800	N/A	N/A	6.01	N/A	IF	RNAV 1
10	APPCH	N/A	N/A	ILRUK	IF	N/A	N/A	N/A	+5000	N/A	N/A	N/A	N/A	IAF	RNAV 1
20	APPCH	N	N/A	ISASI	TF	50.71° Mag 31.19° True	N/A	N/A	+2800	N/A	N/A	5.97	N/A	IF	RNAV 1
10	APPCH	N/A	N/A	DIMOG	IF	N/A	N/A	N/A	+5000	N/A	N/A	N/A	N/A	IAF	RNAV 1
20	APPCH	N	N/A	ISASI	TF	230.71° Mag 211.19° True	N/A	N/A	+2800	N/A	N/A	6.03	N/A	IF	RNAV 1
10	FINAL	N/A	N/A	ISASI	IF	N/A	N/A	N/A	+2800	N/A	N/A	N/A	N/A	IF	RNAV 1
20	FINAL	N	N/A	IBDOD	TF	140.64° Mag 121.10° True	N/A	N/A	+2200	N/A	N/A	2.50	N/A	SDF	RNAV 1
30	FINAL	N	N/A	ESKEG	TF	140.64° Mag 121.09° True	N/A	N/A	+2000	N/A	N/A	1.50	N/A	FAF	RNAV 1
40	FINAL	Y	LOC/DME IFL	RWY14*	CF	140.63° Mag 121.05° True	N/A	N/A	@76	N/A	N/A	6.00	-3.0	LTP/FTP	N/A
10	MA	N	N/A	ESMUB	TF	140.55° Mag 120.87° True	N/A	N/A	+4000	N/A	N/A	N/A	N/A	MAHF	RNAV 1
20	MA	Y	N/A	ESMUB	HM	320.55° Mag 300.87° True	R	N/A	+4000	N/A	N/A	1.00 min	N/A	MAHF	RNAV 1

*Fictitious point = for coding purpose only.

IDENT	Latitude / Longitude (WGS84) DD:MM:SS.SS
MUKAL	S 27:31:37.38W 48:48:29.26
DIMOG	S 27:29:36.03W 48:39:12.38
ILRUK	S 27:39:53.67W 48:46:11.97
ISASI	S 27:34:46.34W 48:42:42.99
IBDOD	S 27:36:03.97W 48:40:18.40
ESKEG	S 27:36:50.53W 48:38:51.61
RWY14	S 27:39:56.59W 48:33:04.35
ESMUB	S 27:48:49.96W 48:16:24.48

COD	Meaning
+	AT OR ABOVE
-	AT OR BELOW
@	AT
R	RECOMMENDED
B	BETWEEN
=	AS ASSIGNED
SDF	STEPDOWN FIX
Y	YES
N	NO
L	LEFT
R	RIGHT
N/A	NOT APPLICABLE
LTP	LANDING THRESHOLD POINT
FTP	FICTITIOUS THRESHOLD POINT