

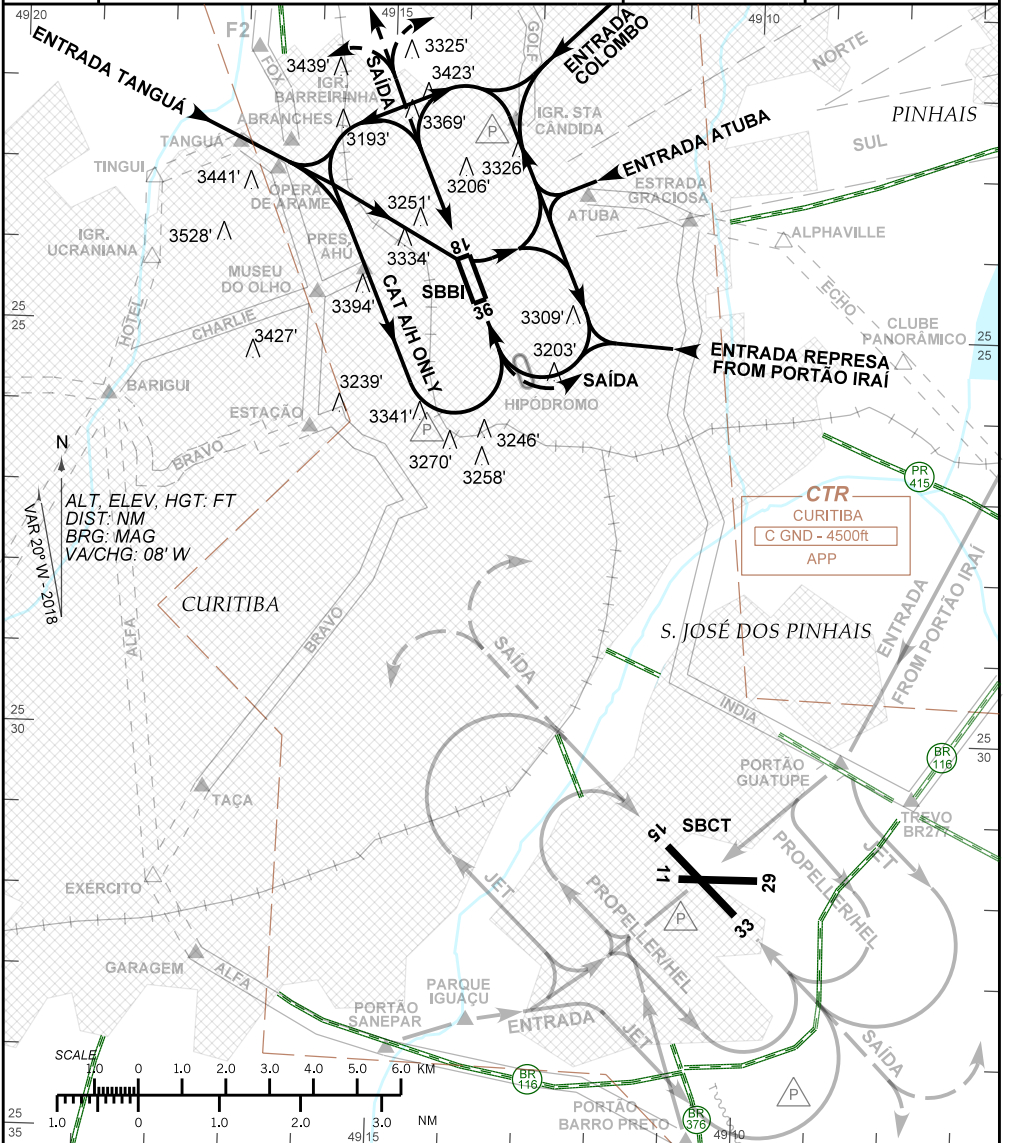
VISUAL APPROACH CHART  
(VAC)

CURITIBA / Baccheri (SBBI)

AD ELEV: 3059'

RWY 18/36

ATIS <b>132.325</b>	APP CURITIBA <b>119.70 119.95 120.65 120.95 129.55 133.15 121.50</b>	TWR BACACHERI <b>118.90</b>	GNDC BACACHERI <b>121.80</b>
------------------------	---	--------------------------------	---------------------------------



**RMK:**  
 1 - ALTITUDES MÍNIMAS NO CIRCUITO DE TRÁFEGO / MINIMUM ALTITUDES IN TRAFFIC CIRCUIT:  
 1.1 - JATO / JET: 4500' - SOMENTE SETOR E / SECTOR E ONLY. IAS MAX 140KT.  
 1.2 - HÉLICE / PROPELLER  
 a) - SETOR E / SECTOR E: 4100' CAT A, B, C. IAS MAX 140KT.  
 b) - SETOR W / SECTOR W: 4000' SOMENTE CAT A / CAT A ONLY.  
 1.3 - HELICÓPTERO / HELICOPTER: 3700' TODOS OS SETORES / ALL SECTORS.  
 2 - INFORMAÇÕES COMPLEMENTARES NO VERSO. SEE REVERSE SIDE FOR ADDITIONAL INFO.

CHANGES: CAT, ALT, RMK, LAYOUT.

RMK

3 - ARR RWY 36 OU DEP RWY 18 NÃO ULTRAPASSAR O HIPÓDROMO PARA O SETOR SUL.  
*ARR RWY 36 OR DEP RWY 18 LIMITED BY THE HIPPODROME FOR THE SOUTH SECTOR.*

4 - PARA POUSO EM SBCT, VER VAC DESSE AERÓDROMO.  
*FOR LANDING AT SBCT, SEE VAC OF THIS AERODROME.*

5 - OBSERVAR AIC SOBRE CIRCULAÇÃO AÉREA VISUAL NA TERMINAL CURITIBA.  
*SEE AIC ABOUT VISUAL FLIGHT IN CURITIBA TERMINAL AREA.*