

INSTRUMENT APPROACH
CHART (IAC)

FLORIANÓPOLIS / Hercílio Luz, INTL (SBFL)

AD ELEV: 17'

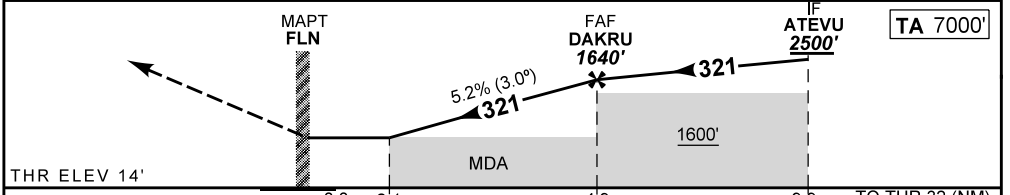
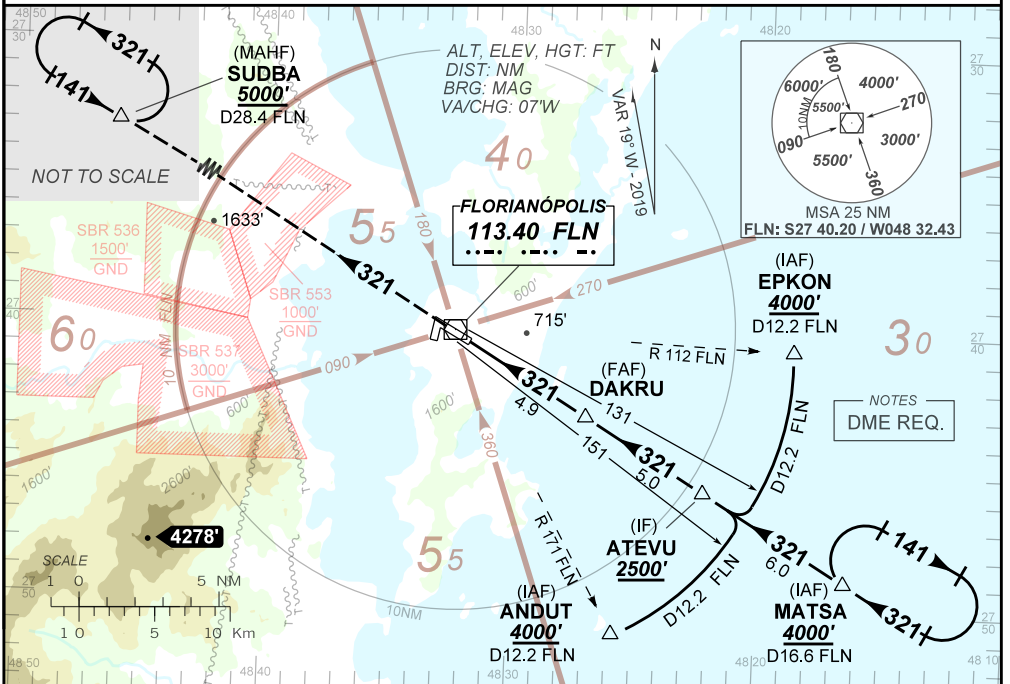
VOR Y RWY 32

D-ATIS 127.45	APP FLORIANÓPOLIS 119.50 119.65 128.95 129.45 129.60 121.50	TWR FLORIANÓPOLIS 118.70 122.80 (MIL) 121.50	GNDC FLORIANÓPOLIS 121.70
VOR FLN 113.40 MHz	FINAL CRS 321°	FAF 1640'	N/A
			VOR MDA / (OCH): 740' / (730')

APCH Perdida: Subir para **5000'**. Manter RDL **321'** do VOR FLN para espera em SUDBA.

Missed APCH: Climb to **5000'**. Maintain **321'** RDL FLN VOR to SUDBA for holding.

RMK: NIL



			0.0	2.1	4.9	9.9	TO THR 32 (NM)	
			0.6	2.7	5.6	10.6	TO DME FLN (NM)	
RWY 32	2.1	3.0	4.0	DAKRU			KT	090 110 130 150 170 190
ALT	740	1020	1339	1640			FPM	500 600 700 800 900 NA
(HGT)	730	1003	1322	1623			FAF-MAPT	NA

STRAIGHT-IN	CAT	A	B	C	D	E
	MDA / (OCH)	740' / (730')				NA
VOR	ALS/NO ALS/ RVR ALS (m)	NIL / 1600 / NIL		NIL / 3400 / NIL		NA
	MDA / (OCH)	NA				
CIRCLING	VIS (m)	NA				



CODING TABLE

IAC VOR Y RWY 32					FLORIANÓPOLIS / Hercílio Luz, INTL (SBFL)							SBFL_IAC_00T		12 SEP 19 TIL 07 NOV 19	
Seq Num	IAP Transition Identifier	Fly Over	Rec Navaid	Fix Ident	Path and Terminator	Course Angle	Turn	Upper Limit Altitude (FT)	Lower Limit Altitude (FT)	Speed Limit (KT)	Speed Limit Description	TM DST	VA (°)	Role Of TheFix	Navigation Specification
10	APCH	N/A	FLN	MATSA	IF	N/A	N/A	N/A	+4000	N/A	N/A	N/A	N/A	IAF	N/A
20	APCH	N/A	FLN	ATEVU	CF	321.04° Mag 301.39° True	N/A	N/A	+2500	N/A	N/A	6.00	N/A	IF	N/A
10	APCH	N/A	FLN	EPKON	IF	N/A	N/A	N/A	+4000	N/A	N/A	N/A	N/A	IAF	N/A
20	APCH	N/A	FLN	FL966(*)	AF	N/A	R	N/A	+2500	N/A	N/A	N/A	N/A	N/A	N/A
30	APCH	N/A	FLN	ATEVU	CF	321.04° Mag 301.39° True	N/A	N/A	+2500	N/A	N/A	1.56	N/A	IF	N/A
10	APCH	N/A	FLN	ANDUT	IF	N/A	N/A	N/A	+4000	N/A	N/A	N/A	N/A	IAF	N/A
20	APCH	N/A	FLN	FL967(*)	AF	N/A	L	N/A	+2500	N/A	N/A	N/A	N/A	N/A	N/A
30	APCH	N/A	FLN	ATEVU	CF	321.04° Mag 301.39° True	N/A	N/A	+2500	N/A	N/A	1.62	N/A	IF	N/A
10	FINAL	N/A	FLN	ATEVU	IF	N/A	N/A	N/A	+2500	N/A	N/A	N/A	N/A	IF	N/A
20	FINAL	N/A	FLN	DAKRU	CF	321.05° Mag 301.43° True	N/A	N/A	R1640	N/A	N/A	5.00	N/A	FAF	N/A
30	FINAL	N/A	FLN	FL002	CF	321.06° Mag 301.46° True	N/A	N/A	@64	N/A	N/A	4.94	-3.00	FTP	N/A
10	MA	N/A	FLN	SUDBA	CF	320.80° Mag 301.38° True	N/A	N/A	+5000	N/A	N/A	29.11	1.43	MAHF	N/A
20	MA	N/A	FLN	SUDBA	HM	140.51° Mag 121.38° True	L	N/A	+5000	N/A	N/A	1.00 min	N/A	MAHF	N/A

(*) Fictitious point = intersection between DME arc and extended runway centerline.

Ident	Latitude / Longitude (WGS84) DD:MM:SS.SS
MATSA	S 27:48:52.80W 48:16:26.40
EPKON	S 27:40:37.74W 48:18:43.34
ANDUT	S 27:50:55.66W 48:25:44.54
FL967	S 27:46:35.53W 48:20:39.66
FL966	S 27:46:33.62W 48:20:43.18
ATEVU	S 27:45:44.85W 48:22:13.06
DAKRU	S 27:43:08.04W 48:27:01.69
VOR FLN	S 27:40:12.00W 48:32:25.80
SUDBA	S 27:25:23.52W 48:59:46.12
FL002	S 27:40:32.93W 48:31:46.67

COD	Meaning
+	AT OR ABOVE
-	AT OR BELOW
@	AT
R	RECOMMENDED
B	BETWEEN
=	AS ASSIGNED
SDF	STEPDOWN FIX
Y	YES
N	NO
L	LEFT
R	RIGHT
N/A	NOT APPLICABLE
LTP	LANDING THRESHOLD POINT
FTP	FICTITIOUS THRESHOLD POINT