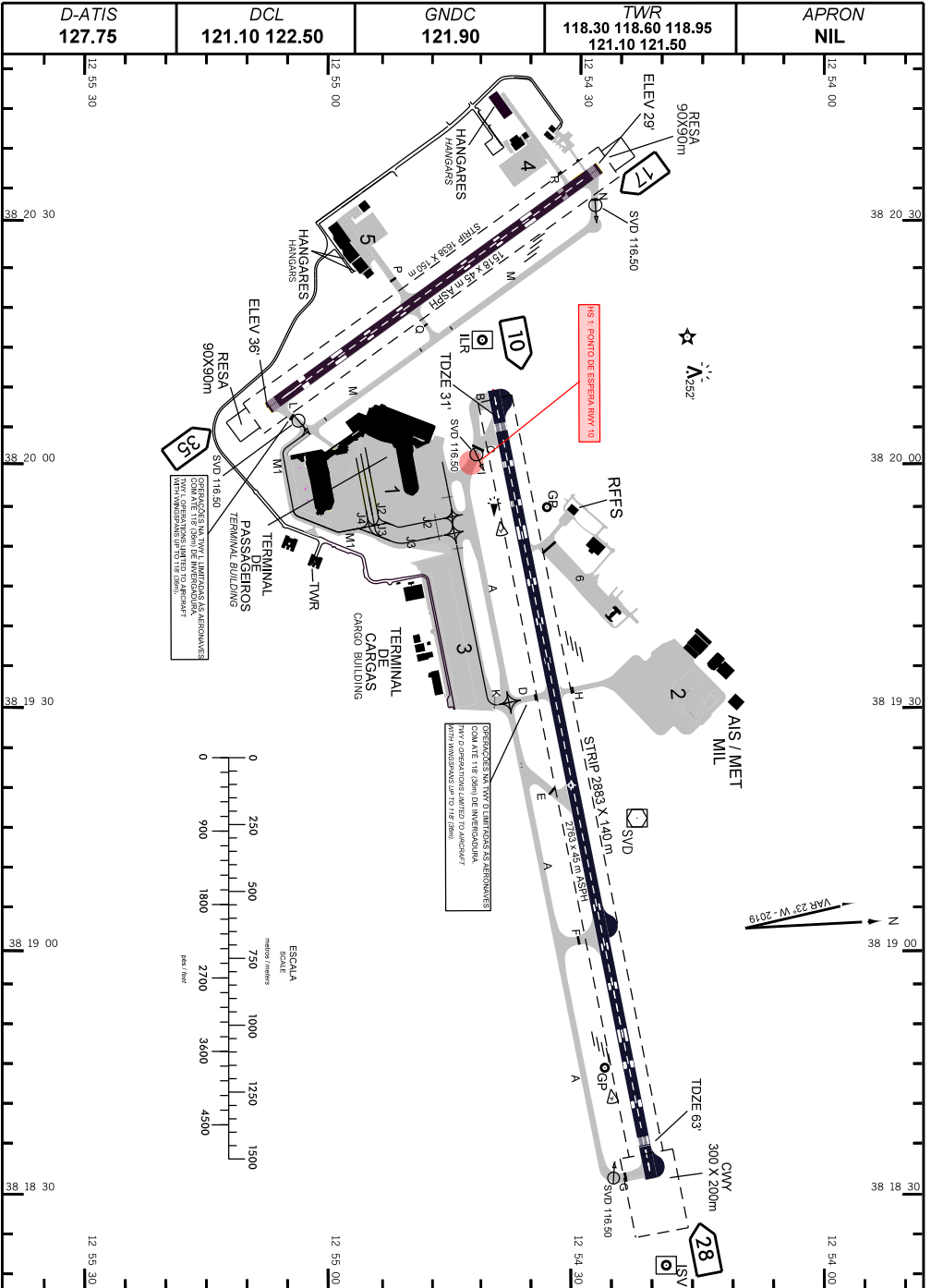
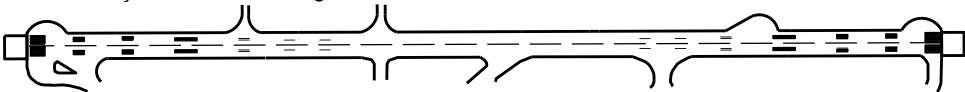
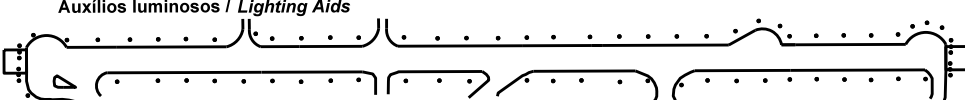
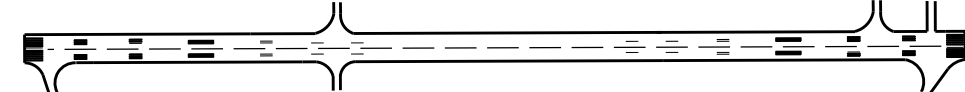
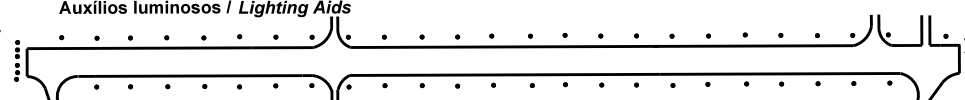


AD ELEV: 66'

ARP S12 54 31 W038 19 21



ADC - SBSV: INFORMAÇÕES COMPLEMENTARES / COMPLEMENTARY INFORMATION

| CARACTERÍSTICAS FÍSICAS / PHYSICAL CHARACTERISTICS | | | | | | | | | | | | |
|--------------------------------------------------------------------------------------------------------------------------------------------|------------|--------------|----------|-------------------------------|-----------------|--------------------------------------|----------------------------|--------------------|-------------|------------------------------------|-----|--|
| PISTA RUNWAY | | | | DIMENSÕES(m) DIMENSIONS(m) | | | | | PCN | TIPO DE SUPERFÍCIE SURFACE KIND | | |
| RWY | BRG MAG | Tipo Type | RCD | RWY | SWY | CWY | STRIP | RESA | RWY | RWY | SWY | |
| a | b | c | d | e | f | g | h | i | j | k | l | |
| 10 28 | 102 282 | PA-1 PA-1 | 4E 4E | 2763 x 45 | | 300 x 200 | 2883 x 140 | | 104/F/B/X/T | ASPH | | |
| 17 35 | 167 347 | NPA NPA | 3C 3C | 1518 x 45 | | | 1638 x 150 | 90 x 90 90 x 90 | 45/F/C/X/U | ASPH | | |
| DISTÂNCIAS DECLARADAS, AUXÍLIOS VISUAIS E COORDENADAS DAS CABECEIRAS DECLARED DISTANCES, VISUAL AIDS AND THRESHOLD COORDINATES | | | | | | | | | | | | |
| RWY | TORA(m) | TODA(m) | ASDA(m) | LDA(m) | AUXÍLIOS / AIDS | ALTURA GEOIDAL(m) GEOID HEIGHT(m) | COORDENADAS COORDINATES | | | | | |
| 10 | 2883 | 3303 | 2883 | 2763 | PAPI | - 10,94m | S12 54 41 W038 20 10 | | | | | |
| 28 | 2883 | 3003 | 2883 | 2763 | PAPI | - 10,95m | S12 54 22 W038 18 36 | | | | | |
| 17 | 1518 | 1518 | 1518 | 1518 | PAPI (3.50°) | - 10,94m | S12 54 28 W038 20 37 | | | | | |
| 35 | 1518 | 1518 | 1518 | 1518 | | - 10,95m | S12 55 08 W038 20 08 | | | | | |
| SERVIÇO DE SALVAMENTO E CONTRAINCÊNDIO / RESCUE AND FIRE FIGHTING SERVICE: RFFS REQ - 10 | | | | | | | | | | | | |
| RWY 10 / 28 | | | | | | | | | | | | |
| Sinalização horizontal / Marking Aids | | | | | | | | | | | | |
|  | | | | | | | | | | | | |
| Auxílios luminosos / Lighting Aids | | | | | | | | | | | | |
|  | | | | | | | | | | | | |
| RWY 17 / 35 | | | | | | | | | | | | |
| Sinalização horizontal / Marking Aids | | | | | | | | | | | | |
|  | | | | | | | | | | | | |
| Auxílios luminosos / Lighting Aids | | | | | | | | | | | | |
|  | | | | | | | | | | | | |
| RMK: | | | | | | | | | | | | |
| 1) MEHT - RWY 17 - 40FT RWY 10 - 52FT RWY 28 - 68 FT 2) RWY 10 E RWY 28 ÚLTIMOS 90M CLSD PARA LDG/TKOF DEVIDO PROVIMENTO DE RESA. | | | | | | | | | | | | |

CHANGESRWY, RWY, HOT SPOT, DIST DECL, PAPI, STRIP, LAYOUT