

**INSTRUMENT APPROACH CHART (IAC)**

**FLORIANÓPOLIS / Hercílio Luz, INTL (SBFL)**

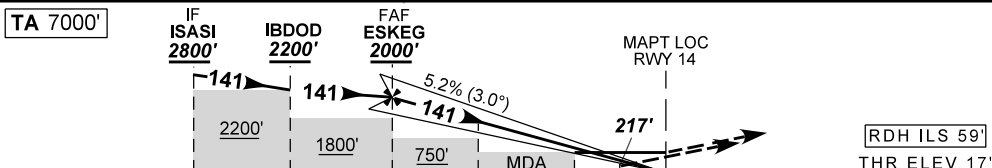
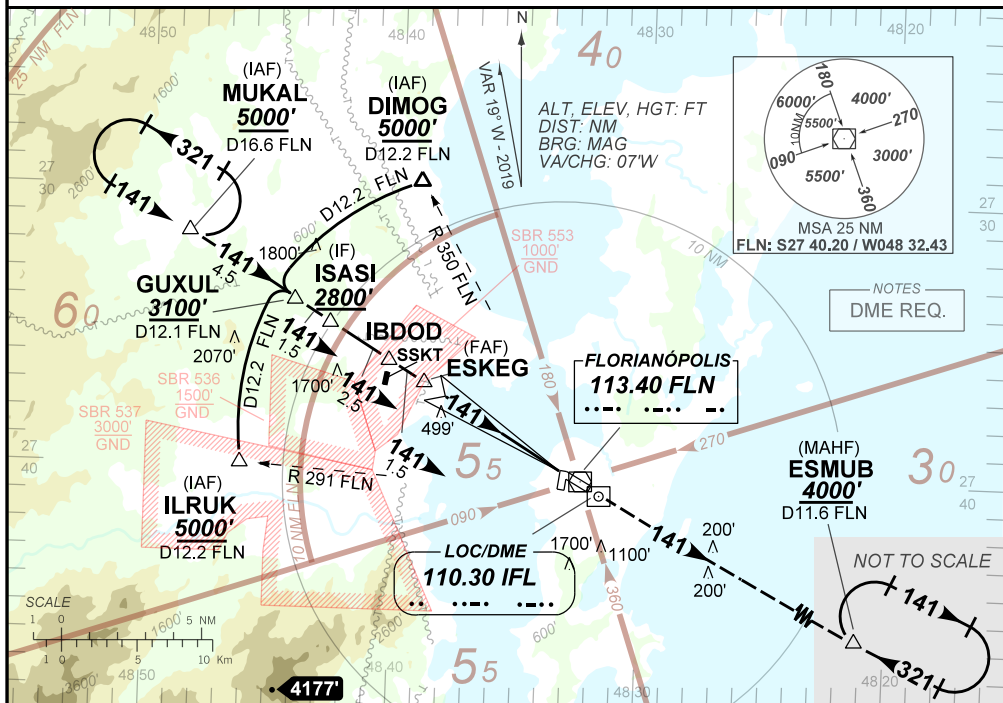
**AD ELEV: 17'**

**ILS K or LOC K RWY 14**

D-ATIS <b>127.45</b>	APP FLORIANÓPOLIS <b>119.50 119.65 128.95 129.45 129.60 121.50</b>	TWR FLORIANÓPOLIS <b>118.70 122.80 (MIL) 121.50</b>	GNDC FLORIANÓPOLIS <b>121.70</b>
LOC IFL <b>110.30 MHz</b>	FINAL CRS <b>141°</b>	FAF <b>2000'</b>	CAT I <b>DA / (OCH): 217' / (200')</b>
		LOC <b>MDA / (OCH): 370' / (350')</b>	

APCH Perdida: Subir para **4000'**. Manter RDL **141'** até ESMUB para espera.  
Missed APCH: Climb to **4000'**. Maintain RDL **141'** up to ESMUB for holding.

RMK: NIL



TO THR 14 (NM)	10.0	7.5	6.0	4.6	0.9	0.4	0.0
TO IFL (DME)	11.5	9.0	6.0	4.6	0.9	0.4	0.0

ESKEG	5.0	4.0	3.0	2.0	0.9	RWY14
2000	1668	1350	1031	713	370	ALT
1983	1651	1333	1014	696	350	(HGT)

STRAIGHT-IN	CAT	A	B	C	D	E
CAT I	DA / (OCH)	217' / (200')				
	ALS/NO ALS/ RVR ALS (m)	800 / 1200 / 700				
LOC	MDA / (OCH)	370' / (350')				
	ALS/NO ALS/ RVR ALS (m)	900 / 1600 / 850				
CIRCLING	MDA / (OCH)	NA				
	VIS (m)	NA				

CHANGES: DEC. MINIM. MSA.



## CODING TABLE

IAC ILS K or LOC K RWY14					FLORIANÓPOLIS / Hercílio Luz, INTL (SBFL)							SBFL_IAC_01U		12 SEP 19	
Seq Num	IAP Transition Identifier	Fly Over	Rec Navaid	Fix Ident	Path and Terminator	Course Angle	Turn	Upper Limit Altitude (FT)	Lower Limit Altitude (FT)	Speed Limit (KT)	Speed Limit Description	TM DST	VA (°)	Role Of TheFix	Navigation Specification
10	APPCH	N/A	FLN	MUKAL	IF	N/A	N/A	N/A	+5000	N/A	N/A	N/A	N/A	IAF	N/A
20	APPCH	N	FLN	GUXUL	CF	140.63° Mag 121.11° True	N/A	N/A	+3100	N/A	N/A	4.48	N/A	N/A	N/A
30	APPCH	N	IFL	ISASI	CF	140.63° Mag 121.11° True	N/A	N/A	+2800	N/A	N/A	1.52	N/A	IF	N/A
10	APPCH	N/A	FLN	DIMOG	IF	N/A	N/A	N/A	+5000	N/A	N/A	N/A	N/A	IAF	N/A
20	APPCH	N	FLN	FLN03(*)	AF	N/A	L	N/A	+3100	N/A	N/A	N/A	N/A	N/A	N/A
30	APPCH	N	FLN	GUXUL	CF	140.63° Mag 121.11° True	N/A	N/A	+3100	N/A	N/A	N/A	N/A	N/A	N/A
40	APPCH	N	IFL	ISASI	CF	140.63° Mag 121.11° True	N/A	N/A	+2800	N/A	N/A	1.52	N/A	IF	N/A
10	APPCH	N/A	FLN	ILRUK	IF	N/A	N/A	N/A	+5000	N/A	N/A	N/A	N/A	IAF	N/A
20	APPCH	N	FLN	FLN04(*)	AF	N/A	R	N/A	+3100	N/A	N/A	N/A	N/A	N/A	N/A
30	APPCH	N	FLN	GUXUL	CF	140.63° Mag 121.11° True	N/A	N/A	+3100	N/A	N/A	N/A	N/A	N/A	N/A
40	APPCH	N	IFL	ISASI	CF	140.63° Mag 121.11° True	N/A	N/A	+2800	N/A	N/A	1.52	N/A	IF	N/A
10	FINAL	N/A	IFL	ISASI	IF	N/A	N/A	N/A	+2800	N/A	N/A	N/A	N/A	IF	N/A
20	FINAL	N	IFL	IBDOD	CF	140.64° Mag 121.10° True	N/A	N/A	+2200	N/A	N/A	2.50	N/A	SDF	N/A
30	FINAL	N	IFL	ESKEG	CF	140.64° Mag 121.10° True	N/A	N/A	+2000	N/A	N/A	1.50	N/A	FAF	N/A
40	FINAL	N	IFL	SDF01(*)	CF	140.63° Mag 121.05° True	N/A	N/A	R1551	N/A	N/A	1.4	N/A	SDF	N/A
50	FINAL	Y	IFL	RWY14	CF	140.63° Mag 121.05° True	N/A	N/A	@76	N/A	N/A	N/A	-3.03	LTP/FTP	N/A
10	MA	N	FLN	ESMUB	CF	140.84° Mag 121.16° True	N/A	N/A	+4000	N/A	N/A	N/A	N/A	MAHF	N/A
20	MA	Y	FLN	ESMUB	HM	320.84° Mag 301.16° True	R	N/A	+4000	N/A	N/A	1.00 min	0.00	MAHF	N/A

Ident	Latitude / Longitude (WGS84) DD:MM:SS.SS
MUKAL	S 27:31:37.38W 48:48:29.26
ILRUK	S 27:39:53.67W 48:46:11.97
DIMOG	S 27:29:36.03W 48:39:12.38
GUXUL	S 27:33:59.10W 48:44:10.13
ISASI	S 27:34:46.34W 48:42:42.99
IBDOD	S 27:36:03.97W 48:40:18.40
ESKEG	S 27:36:50.53W 48:38:51.61
RWY14	S 27:39:56.63W 48:33:04.27
ESMUB	S 27:48:49.96W 48:16:24.48
SDF01*	S 27:37:33.98W 048:37:30.60
FLN03*	S 27:33:58.41W 048:44:12.18
FLN04*	S 27:33:56.24W 048:44:16.23

COD	Meaning
+	AT OR ABOVE
-	AT OR BELOW
@	AT
R	RECOMMENDED
B	BETWEEN
=	AS ASSIGNED
SDF	STEPDOWN FIX
Y	YES
N	NO
L	LEFT
R	RIGHT
N/A	NOT APPLICABLE
LTP	LANDING THRESHOLD POINT
FTP	FICTITIOUS THRESHOLD POINT
*	FICTICIOUS POINT